



+

ACCESSORIES

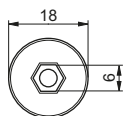
FOR
VENETIAN BLIND MOTORS

GEIGER
ANTRIEBSTECHNIK

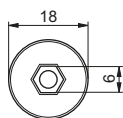
M56.... | Coupling pieces

Characteristics

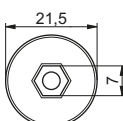
- for adapting the motor output to the reversing rod
- different numbers of set screws are required depending on how the turning bar is mounted



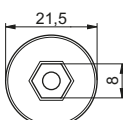
Part no.	Material	Output	Set screws
M56E369	Steel	⊙ 6 mm	4



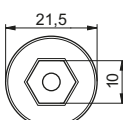
Part no.	Material	Output	Set screws
M56E398	Steel	⊙ 6 mm	2



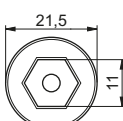
Part no.	Material	Output	Set screws
M56E235	Zinc die cast	⊙ 7 mm	2



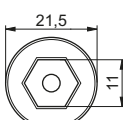
Part no.	Material	Output	Set screws
M56E278	Zinc die cast	⊙ 8 mm	2



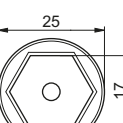
Part no.	Material	Output	Set screws
M56E248	Zinc die cast	⊙ 10 mm	1



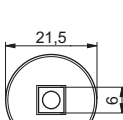
Part no.	Material	Output	Set screws
M56E247	Zinc die cast	⊙ 11 mm	2



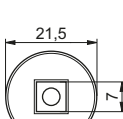
Part no.	Material	Output	Set screws
M56E232	Zinc die cast	⊙ 11 mm	1



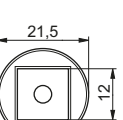
Part no.	Material	Output	Set screws
M56E526	Zinc die cast	⊙ 17 mm	1



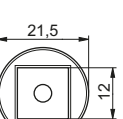
Part no.	Material	Output	Set screws
M56E672	Zinc die cast	⊙ 6 mm	2



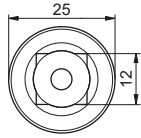
Part no.	Material	Output	Set screws
M56K064	Zinc die cast	⊙ 7 mm	2



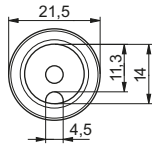
Part no.	Material	Output	Set screws
M56K054	Zinc die cast	⊙ 12 mm	1



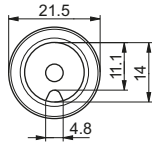
Part no.	Material	Output	Set screws
M56K063	Zinc die cast	⊙ 12 mm	2



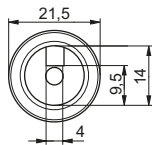
Part no.	Material	Output	Set screws
M56E069	Steel	12 mm	2



Part no.	Material	Output	Set screws
M56K061	Zinc die cast	Flat groove	2



Part no.	Material	Output	Set screws
M56E453	Zinc die cast	Flat groove	2



Part no.	Material	Output	Set screws
M56K119	Zinc die cast	High groove	2

Housing and mounting options

The GJ56.. motors can be supplied with two or four mounting feet. We distinguish between:



Standard

- 2 mounting feet per motor
- 2 holes per foot (without thread)



Standard screw fixation

- 2 mounting feet per motor
- 2 threaded holes per foot



Universal

- 4 mounting feet per motor
- 2 threaded holes per foot



Mono-Universal

- 2 mounting feet per motor
- 2 threaded holes per foot

M56F... | Standard fixation kits with clamping bracket

Characteristics

- for fixation in standard head rails using clamping brackets and damping elements
- the damping elements ensure additional noise optimisation of the external blind system
- please observe the output torque of the drive!
- Further dimensions on request



Head rails 51 x 57 mm, centre height 29.0 mm

Part no.	Max. load	Axle height	Head rail (HxW)	Number of brackets
M56F583	20 Nm	29.0 mm	51x57 mm	2

Head rails 51 x 57 mm, centre height 29.5 mm

Part no.	Max. load	Axle height	Head rail (HxW)	Number of brackets
M56F580	10 Nm	29.5 mm	51x57 mm	1

Head rails 51 x 57 mm, centre height 30.5 mm

Part no.	Max. load	Axle height	Head rail (HxW)	Number of brackets
M56F582	10 Nm	30.5 mm	51x57 mm	1
M56F585	20 Nm	30.5 mm	51x57 mm	2

Head rails 56 x 57 mm, centre height 29.0 mm

Part no.	Max. load	Axle height	Head rail (HxW)	Number of brackets
M56F581	10 Nm	29.0 mm	56x57 mm	1
M56F584	20 Nm	29.0 mm	56x57 mm	2

Head rails (Schlotterer) 56 x 58 mm, axle height 30.0 mm

Part no.	Max. load	Axle height	Head rail (HxW)	Number of brackets
M56F753	10 Nm	30.0 mm	56x58 mm	1
M56F754	20 Nm	30.0 mm	56x58 mm	2

M56F... | Standard fixation kits with clamping bridge

Characteristics

- for fixation in standard head rails using clamping bridge and damping elements
- the damping elements ensure additional noise optimisation of the external blind system
- please observe the output torque of the drive!
- Further dimensions on request



Head rails 57 x 51 mm, centre height 29.0 mm

Part no.	Max. load	Axle height	Head rail (HxW)	Number of bridges
M56F595	10 Nm	29.0 mm	57x51 mm	1
M56F596	20 Nm	29.0 mm	57x51 mm	2



Head rails 66 x 65 mm, centre height 34.0 mm

Part no.	Max. load	Axle height	Head rail (HxW)	Number of bridges
M56F586	10 Nm	34.0 mm	66x65 mm	1
M56F587	20 Nm	34.0 mm	66x65 mm	2

Head rails 66 x 78 mm, centre height 32.0 mm

Part no.	Max. load	Axle height	Head rail (HxW)	Number of bridges
M56F588	10 Nm	32.0 mm	66x78 mm	1
M56F589	20 Nm	32.0 mm	66x78 mm	1

M56F... | Universal fixation kits with clamping bracket



Characteristics

- for fixation in standard head rails using clamping brackets and damping elements
- the damping elements ensure additional noise optimisation of the external blind system
- please observe the output torque of the drive!
- Further dimensions on request

Head rails 56 x 58 mm, centre height 30.0 mm

Part no.	Max. load	Axle height	Head rail (HxW)	Number of brackets
M56F755	10 Nm	30.0 mm	56x58 mm (aluminium)	1
M56F757	20 Nm	30.0 mm	56x58 mm (aluminium)	2

Part no.	Max. load	Axle height	Head rail (HxW)	Number of brackets
M56F756	10 Nm	30.0 mm	56x58 mm (steel)	1
M56F758	20 Nm	30.0 mm	56x58 mm (steel)	2

HD head rails 51 x 56 mm, centre height 29.5 mm

Part no.	Max. load	Axle height	Head rail (HxW)	Number of brackets
M56F765	10 Nm	29.5 mm	51x56 mm	1
M56F766	20 Nm	29.5 mm	51x56 mm	2

ROMA head rails 51 x 56 mm, centre height 29.5 mm

Part no.	Max. load	Axle height	Head rail (HxW)	Number of brackets
M56F767	10 Nm	29.5 mm	51x56 mm	1
M56F768	20 Nm	29.5 mm	51x56 mm	2

M56F... | Monouniversal fixation kits



Characteristics

- for fixation in standard head rails using clamping brackets and damping elements
- the damping elements ensure additional noise optimisation of the external blind system
- please observe the output torque of the drive!
- Further dimensions on request

MHZ head rails 55 x 55 mm, centre height 30.0 mm with spring clip

Part no.	Max. load	Axle height	Head rail (HxW)	Number of brackets
M56F769	10 Nm	30.0 mm	55x55 mm	1
M56F770	20 Nm	30.0 mm	55x55 mm	2

Gradhermetic head rails 60 x 57 mm, centre height 30.0 mm with clamping bracket

Part no.	Max. load	Axle height	Head rail (HxW)	Number of brackets
M56F771	10 Nm	30.0 mm	60x57 mm	1
M56F772	20 Nm	30.0 mm	55x55 mm	2

M56E... | Plastic clips for screw fixation

Characteristics

- for adjusting the axle height with screw fixation
- good damping properties



Part no.	Max. load	Axle height
M56E110	20 Nm	30.5 mm



Part no.	Max. load	Axle height
M56E231	20 Nm	35.5 mm

M56K... | Self-adhesive damping foil for screw fixation

Characteristics

- for adjusting the axle height with screw fixation
- good damping properties



Part no.	Max. load	Axle height
M56K155	20 Nm	30.0 mm



Part no.	Max. load	Axle height
M56K062	20 Nm	30.5 mm

M56E143 | Mounting accessories

Characteristics

- for easy tensioning of the clamping brackets or bridges



Part no.	Description
M56E143	Square-section key

M56.... | Connecting cables, black, for GJ56.. ME, GJ5606 DuoDrive, GJ56.. E14, GJ5610v1



Characteristics

- various plug and connection ends available
- suitable for indoor and outdoor use
- UV-resistant
- halogen-free
- Temperature range: -25 °C to 60 °C
- Cable designation: 05RR-F 4G 0.75mm²

Part no.	Length [cm]	Cable end A	Cable end B	Note
M56K067	90	GEIGER plug	Open end cable	-
M56E386	200	GEIGER plug	Open end cable	-
M56E219	300	GEIGER plug	Open end cable	-
M56E623	30	GEIGER plug	Hirschmann STAS3 plug	-
M56K066	50	GEIGER plug	Hirschmann STAS3 plug	-
M56K042	90	GEIGER plug	Hirschmann STAS3 plug	-
M56E378	150	GEIGER plug	Hirschmann STAS3 plug	-
M56E399	150	Hirschmann STAK3 cable socket	Open end cable	-
M56E281	200	Hirschmann STAK3 cable socket	Hirschmann STAS3 plug	-
M56E196	50	GEIGER plug	Hirschmann STAS3 plug	with assembly instructions GJ56..
M56E195	90	GEIGER plug	Hirschmann STAS3 plug	with assembly instructions GJ56..

Further cable lengths on request.

M56E409 | Connecting cables, white, for GJ56.. ME, GJ5606 DuoDrive, GJ56.. E14, GJ5610v1



Characteristics

- suitable for indoor and outdoor use
- UV-resistant
- not halogen-free
- Temperature range: -25 °C to 60 °C
- Cable designation: 05RN-F 4G 0.75mm²

Part no.	Length [cm]	Cable end A	Cable end B
M56E409	300	GEIGER plug	Open end cable

M56E45. | Connecting cables, grey, for GJ56.. T90



Characteristics

- various plug and connection ends available
- suitable for indoor and outdoor use
- UV-resistant
- halogen-free
- Temperature range: -40 °C to 90 °C
- Cable designation: UNIPUR 4G 0.75mm²

Part no.	Length [cm]	Cable end A	Cable end B
M56E451	50	GEIGER plug	Hirschmann STAS3 plug
M56E450	90	GEIGER plug	Hirschmann STAS3 plug

M56E... | Connecting cables for GJ56.. AIR



Characteristics

- suitable for indoor and outdoor use
- UV-resistant
- halogen-free
- Temperature range: -25 °C to 60 °C
- Cable designation: 05RR-F 4G 0.75mm²

Part no.	Length [cm]	Cable end A	Cable end B
M56E462	90	GEIGER plug	STAS 3
M56E627	50	GEIGER plug	STAS 3
M56E628	300	GEIGER plug	Open end cable

Further cable lengths on request.

M56E... | Connecting cables for GJ56.. E17 SMI



Characteristics

- suitable for indoor and outdoor use
- UV-resistant
- halogen-free
- Temperature range: -25 °C to 60 °C
- Cable designation: 05RR-F 5G 0.75mm²

Part no.	Length [cm]	Cable end A	Cable end B
M56E463	90	GEIGER plug	STAS 4
M56E630	50	GEIGER plug	STAS 4
M56E631	300	GEIGER plug	Open end cable

Further cable lengths on request.

M56E... | Extension for overrun limit switch



Characteristics

- Extension for limit stop switches for blind drives
- a maximum of 2 extensions of 15 mm height each may be attached

Part no.	Description
M56E288	black, for drives with mechanical cut-off
M56E565	blue, for GJ56.. E14
M56E670	grey, for GJ56.. AIR
M56E679	yellow, for GJ56.. E17 SMI

M56... | Setting switch



Characteristics

- for setting motors with electronic limit switching
- various plug and connection ends available

Note

- a 5-wire setting switch M56F152 or M56F153 is required for SMI motor
- SMI being a standard, any setting switch of the SMI group can be used

Part no.	Description
M56F152	with service terminal (D) / 5-wire / suitable for SMI
M56F153	with service terminal (CH) / 5-wire / suitable for SMI
M56B265	Adaptation cable with service terminal and STAS3
M56E399	Adaptation cable with STAK3 and open cable end, 150 cm
M56E658	Adaptation cable with STAK4 and open cable end, 150 cm
M56B265	Adaptation cable with service terminal and STAS3

M56K... | Hirschmann 3-pole connections



Note

- Delivery without cable

Part no.	Description
M56K075	Hirschmann STAK3 cable socket
M56K078	Hirschmann STAS3 plug
M56K079	Hirschmann STAS3 bracket

M56K... | Hirschmann 4-pole connections



Note

- STAK4 coupling pieces and STAS4 plugs are required for connection with SMI motors
- Delivery without cable

Part no.	Description
M56K087	Hirschmann STAS4 N V0 plug, grey
M56K179	Hirschmann STAS4 N V0 plug, black
M56K180	Hirschmann STAK4 N V0 coupling, black
M56K088	Hirschmann STAS4 safety bracket (no printing)

Gerhard Geiger GmbH & Co. KG
Schleifmühle 6 | D-74321 Bietigheim-Bissingen
T +49 (0) 7142 9380 | F +49 (0) 7142 938 230
info@geiger.de | www.geiger.de

GEIGER
ANTRIEBSTECHNIK