



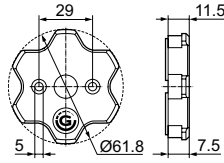
ACCESSORIES

FOR
TUBULAR MOTORS

GEIGER
ANTRIEBSTECHNIK

M35F251 | SOC flange for 35 mm motors

Application: **all applications**



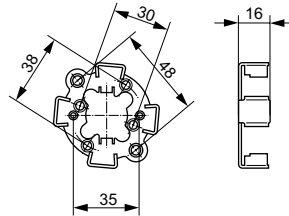
Characteristics

- For mounting 35 mm motors in a star engine bearer
- Incl. 2 pan-head screw 4x18 mm
- Motor can be removed at any time

| Part no. | Suitable for motor head | | max. load | screwless fixation |
|----------|-------------------------|-----|-----------|--------------------|
| | COM | SOC | | |
| M35F251 | - | X | 20 Nm | No |

M45F354 | Engine bearer with clip system

Application: **all applications**



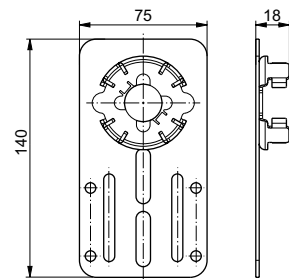
Characteristics

- Quick + ergonomic mounting: "clip + ready"
- Motor can be removed at any time

| Part no. | Suitable for motor head | | max. load | screwless fixation |
|----------|-------------------------|-----|-----------|--------------------|
| | COM | SOC | | |
| M45F354 | X | - | 40 Nm | Yes |

M45F356 | Engine bearer with clip system

Application: **Built-in rolling shutter**



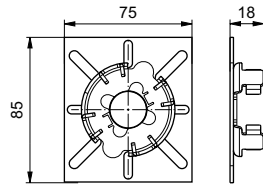
Characteristics

- quick + ergonomic mounting: "clip + ready"
- Motor can be removed at any time
- Height adjustable: Oblong holes for stud bolts are available

| Part no. | Suitable for motor head | | max. load | screwless fixation |
|----------|-------------------------|-----|-----------|--------------------|
| | COM | SOC | | |
| M45F356 | X | - | 40 Nm | Yes |

M45F357 | Engine bearer with clip system

Application: **all applications**



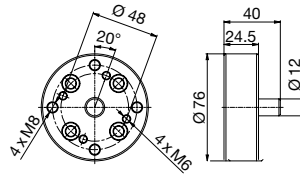
Characteristics

- Quick + ergonomic mounting: "clip + ready"
- Motor can be removed at any time

| Part no. | Suitable for motor head | | max. load | screwless fixation |
|----------|-------------------------|-----|-----------|--------------------|
| | COM | SOC | | |
| M45F357 | X | - | 40 Nm | Yes |

M45F169 | Spacer

Application: **Awnings**



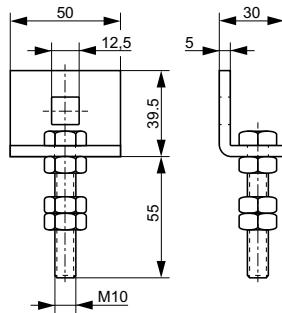
Characteristics

- Allows one-to-one replacement of a gear with a GEIGER motor. Shortening the awning or the support tube is not necessary!

| Part no. | Suitable for motor head | | max. load | screwless fixation |
|----------|-------------------------|-----|-----------|--------------------|
| | COM | SOC | | |
| M45F169 | X | - | 50 Nm | No |

M45F397 | Square bracket fixation

Application: **Built-in rolling shutter**



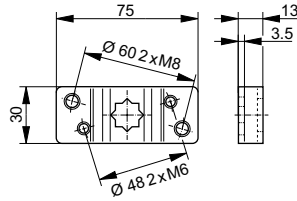
Characteristics

- For SOLIDline motors with COM and SOC motor heads, square fixation M45F883

| Part no. |
|----------|
| M45F397 |

M45F882 | Square star engine bearer, with square insert and pin

Application: **Awnings / built-in rolling shutters**



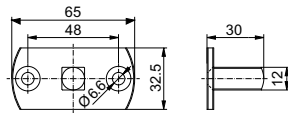
Characteristics

- Low-priced fixation option
- Universal fixation option
- Classic and proven
- 12 mm square
- Secure square insert on bearer side with pin
- Lock square insert into the motor head with pressure piece

| Part no. | Suitable for motor head | | max. load | screwless fixation |
|----------|-------------------------|-----|-----------|--------------------|
| | COM | SOC | | |
| M45F882 | X | X | 30 Nm | Yes |

M45F884 | Square engine bearer

Application: **Awnings / built-in rolling shutters / screens**



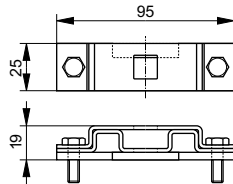
Characteristics

- Low-priced fixation option
- Universal fixation option
- 12 mm square

| Part no. | Suitable for motor head | | max. load | screwless fixation |
|----------|-------------------------|-----|-----------|--------------------|
| | COM | SOC | | |
| M45F884 | X | X | 40 Nm | Yes |

M45F885+M45F... | Clamp engine bearer

Application: **Build-in rolling shutter (in-wall bearer)**



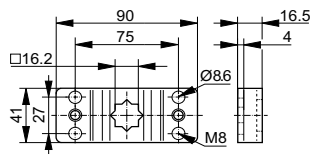
Characteristics

- Can be used whenever an in-wall bearer is found in renovation
- Engine clamp bearer M45F885 + square trunnion with split pin
- 12 mm square

| Part no. | Suitable for motor head | | max. load | screwless fixation |
|-------------------|-------------------------|-----|-----------|--------------------|
| | COM | SOC | | |
| M45F885 + M45F883 | X | X | 40 Nm | Yes |

M45K163 | Square star bearer for TECline NHK drives

Application: **Awnings / built-in rolling shutters**



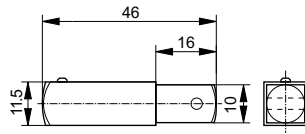
Characteristics

- Low-priced fixation option
- Universal fixation option
- 12 mm square
- Lock square insert into the motor head with pressure piece

| Part no. | Suitable for motor head | | max. load | screwless fixation |
|----------|-------------------------|-----|-----------|--------------------|
| | COM | SOC | | |
| M45F882 | X | X | 140 Nm | Yes |

M45F887 | Square adapter bearer 10 x 10 mm

Application: **Built-in rolling shutter**

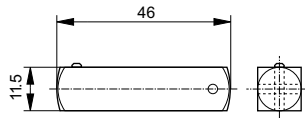


Characteristics

- For existing 10 mm square bearers
- Low-priced fixation option
- Universal fixation option
- Secure square insert on bearer side with pin

| Part no. | Suitable for motor head | | max. load | screwless fixation |
|----------|-------------------------|-----|-----------|--------------------|
| | COM | SOC | | |
| M45F887 | X | X | 30 Nm | Yes |

M45F883 | Square 12 x 12 mm



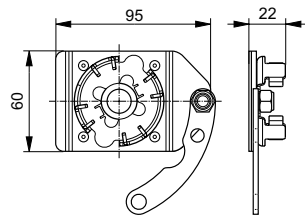
Characteristics

- For SOLIDline-KS/-COM/-SOC
- Incl. split pin

| Part no. | Suitable for motor head | | max. load | screwless fixation |
|----------|-------------------------|-----|-----------|--------------------|
| | COM | SOC | | |
| M45F883 | X | X | 40 Nm | Yes |

M45F19. | Engine bearer with clip system

Application: **Front-mounted rolling shutters (Heroal)**



Characteristics

- Screwless fixation in front mounted elements (HEROAL)
- Quick + ergonomic mounting: "clip + ready"
- Motor can be removed at any time

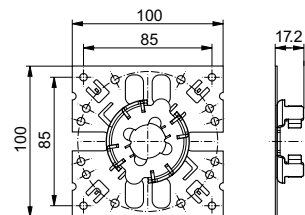
Note

- Left-hand version: M45F198, Right-hand version: M45F197

| Part no. | Suitable for motor head | | max. load | screwless fixation | Manufacturer |
|----------|-------------------------|-----|-----------|--------------------|--------------|
| | COM | SOC | | | |
| M45F197 | X | - | 20 Nm | Yes | Heroal |
| M45F198 | X | - | 20 Nm | Yes | Heroal |

M45F219 | Engine bearer with clip system

Application: **Rolling shutters, top-mounted elements (VEKAVARIANT)**



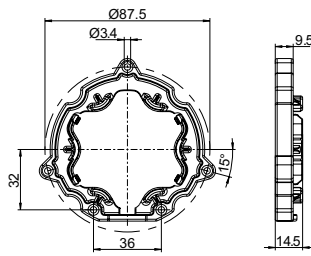
Characteristics

- Special fixation for VEKAVARIANT
- Quick + ergonomic mounting: "clip + ready"
- Motor can be removed at any time
- Different orientations in the 'VEKA star'

| Part no. | Suitable for motor head | | max. load | screwless fixation | Manufacturer |
|----------|-------------------------|-----|-----------|--------------------|--------------|
| | COM | SOC | | | |
| M45F219 | X | - | 20 Nm | Yes | VEKAVARIANT |

M45F178 | Engine bearer with clip system

Application: **Facade awnings, screens with and without ZIP guidance**



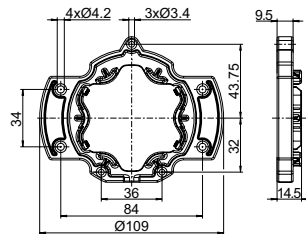
Characteristics

- Quick + ergonomic mounting: "clip + ready"
- Motor can be removed at any time

| Part no. | Suitable for motor head | | max. load | screwless fixation | Manufacturer |
|----------|-------------------------|-----|-----------|--------------------|--------------|
| | COM | SOC | | | |
| M45F178 | - | X | 20 Nm | Yes | Heim+Haus |

M45F179 | Engine bearer with clip system

Application: **Facade awnings, screens with and without ZIP guidance**



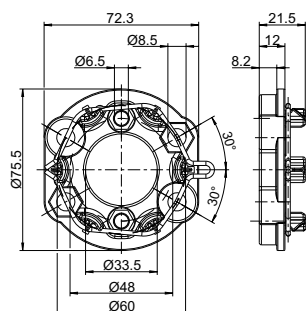
Characteristics

- Quick + ergonomic mounting: "clip + ready"
- Motor can be removed at any time

| Part no. | Suitable for motor head | | max. load | screwless fixation | Manufacturer |
|----------|-------------------------|-----|-----------|--------------------|--------------|
| | COM | SOC | | | |
| M45F179 | - | X | 20 Nm | Yes | Heim+Haus |

M45F176 | Engine bearer

Application: **Folding arm and facade awnings, screens with ZIP guidance**



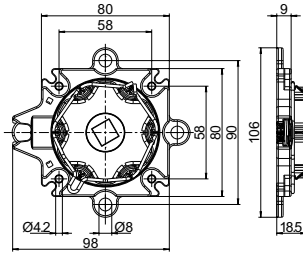
Characteristics

- Quick + ergonomic mounting: "clip + ready"
- Motor can be removed at any time

| Part no. | Suitable for motor head | | max. load | screwless fixation |
|----------|-------------------------|-----|-----------|--------------------|
| | COM | SOC | | |
| M45F176 | - | X | 50 Nm | Yes |

M45F193 | Roller clip bearer

Application: **Rolling shutters, screens with and without ZIP guide**



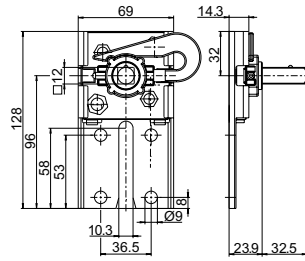
Characteristics

- For front- and top-mounted boxes
- Quick + ergonomic mounting: "clip + ready"
- Motor can be removed at any time

| Part no. | Suitable for motor head | | max. load | screwless fixation |
|----------|-------------------------|-----|-----------|--------------------|
| | COM | SOC | | |
| M45F193 | - | X | 20 Nm | Yes |

M45F181 | Roller bearer

Application: **Rolling shutter**



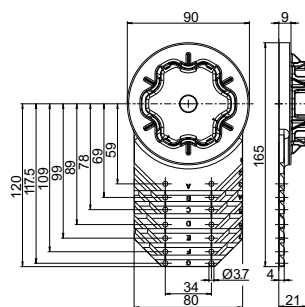
Characteristics

- Built-in
- Motor can be removed at any time

| Part no. | Suitable for motor head | | max. load | screwless fixation |
|----------|-------------------------|-----|-----------|--------------------|
| | COM | SOC | | |
| M45F181 | X | X | 20 Nm | Yes |

M45F182 | Engine bearer with folding plastic plate

Application: **Rolling shutters, screens with and without ZIP guide**

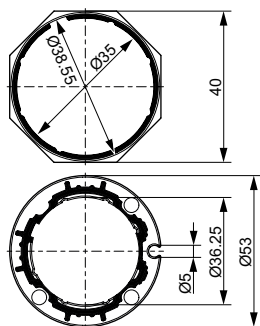


Characteristics

- Suitable for front-mounted elements 125 to 205 mm
- Quick + ergonomic mounting: "clip + ready"
- Motor can be removed at any time

| Part no. | Suitable for motor head | | max. load | screwless fixation |
|----------|-------------------------|-----|-----------|--------------------|
| | COM | SOC | | |
| M45F182 | - | X | 20 Nm | Yes |

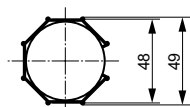
M35F... | Adapters and drivers for 35 mm motors



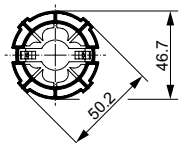
| Part no. | Driver | Adapter | Tube | Diameter [mm]* | max. load | Manufacturer |
|----------|---------|---------|----------------|----------------|-----------|--------------|
| M35F800 | M35K055 | M35K056 | Octagonal tube | 40 | 10 Nm | - |

| Part no. | Driver | Adapter | Tube | Diameter [mm]* | max. load | Manufacturer |
|----------|---------|---------|--------------|----------------|-----------|--------------|
| M35F801 | M35K021 | M35K022 | Profile tube | 53 | 10 Nm | - |

M45F... | Adapters and drivers for 45mm motor

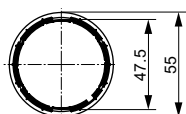


| Part no. | Driver | Adapter | Tube | Diameter [mm]* | max. load | Manufacturer |
|----------|---------|---------|----------------|----------------|-----------|--------------|
| M45F800 | M45F024 | M45E148 | Octagonal tube | 50 | 40 Nm | - |

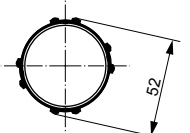


| Part no. | Driver | Adapter | Tube | Diameter [mm]* | max. load | Manufacturer |
|----------|---------|---------|--------------|----------------|-----------|--------------|
| M45F809 | M45E233 | - | Profile tube | 50 | 40 Nm | - |

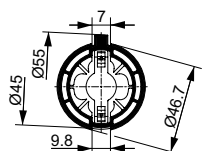
Only suitable for motors with KS, COM or SOC head



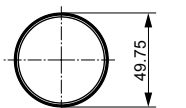
| Part no. | Driver | Adapter | Tube | Diameter [mm]* | max. load | Manufacturer |
|----------|---------|---------|------------|----------------|-----------|--------------|
| M45F844 | M45E582 | M45E583 | Round tube | 55 | | Bandalux |



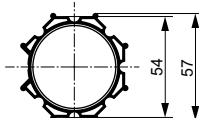
| Part no. | Driver | Adapter | Tube | Diameter [mm]* | max. load | Manufacturer |
|----------|---------|---------|-----------|----------------|-----------|--------------|
| M45F807 | M45E085 | M45E207 | Tube (FR) | 54 | 40 Nm | ZF |



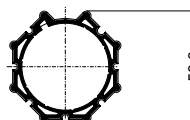
| Part no. | Driver | Adapter | Tube | Diameter [mm]* | max. load | Manufacturer |
|----------|---------|---------|--------------|----------------|-----------|--------------|
| M45F842 | M45E560 | M45E561 | Dolphin tube | 53 | | Delfin |



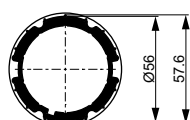
| Part no. | Driver | Adapter | Tube | Diameter [mm]* | max. load | Manufacturer |
|----------|---------|---------|------------|----------------|-----------|--------------|
| M45F810 | M45E235 | M45E234 | Round tube | 50 | 40 Nm | - |



| Part no. | Driver | Adapter | Tube | Diameter [mm]* | max. load | Manufacturer |
|----------|---------|---------|----------------|----------------|-----------|--------------|
| M45F801 | M45E023 | M45E147 | Octagonal tube | 60 | 40 Nm | Italprofil |

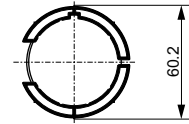


| Part no. | Driver | Adapter | Tube | Diameter [mm]* | max. load | Manufacturer |
|----------|---------|---------|----------------|----------------|-----------|--------------|
| M45F824 | M45E454 | M45E455 | Octagonal tube | 60 | 40 Nm | Ribsol |

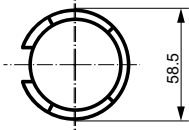


| Part no. | Driver | Adapter | Tube | Diameter [mm]* | max. load | Manufacturer |
|----------|---------|---------|--------------------------------|----------------|-----------|--------------|
| M45F850 | M45E586 | M45E587 | Round tube with groove profile | 60 | 40 Nm | Griesser |

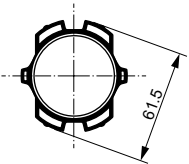
* Outer tube diameter or standard commercial designation on the market



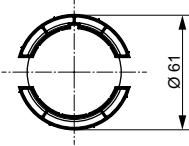
| Part no. | Driver | Adapter | Tube | Diameter [mm]* | max. load | Manufacturer |
|----------|---------|---------|--------------------------------|----------------|-----------|--------------|
| M45F821 | M45E399 | M45E400 | Round tube with groove profile | 62 | 40 Nm | Deprat |



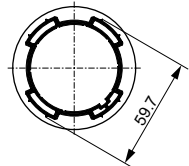
| Part no. | Driver | Adapter | Tube | Diameter [mm]* | max. load | Manufacturer |
|----------|---------|---------|--------------------------------|----------------|-----------|---------------------------|
| M45F813 | M45E280 | M45E279 | Round tube with groove profile | 63 | 40 Nm | Welser, PVG (flat groove) |



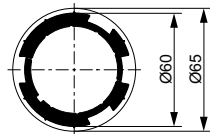
| Part no. | Driver | Adapter | Tube | Diameter [mm]* | max. load | Manufacturer |
|----------|---------|---------|-----------|----------------|-----------|--------------|
| M45F802 | M45E087 | M45E149 | Tube (FR) | 64 | 40 Nm | ZF |



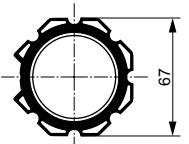
| Part no. | Driver | Adapter | Tube | Diameter [mm]* | max. load | Manufacturer |
|----------|---------|---------|--------------------------------|----------------|-----------|--------------|
| M45F817 | M45E376 | M45E377 | Round tube with groove profile | 65 | 40 Nm | - |



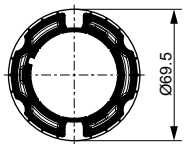
| Part no. | Driver | Adapter | Tube | Diameter [mm]* | max. load | Manufacturer |
|----------|---------|---------|--------------------------------|----------------|-----------|--------------|
| M45F822 | M45E450 | M45E451 | Round tube with groove profile | 65 | 40 Nm | Benthin |



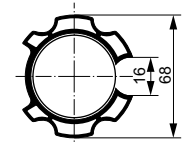
| Part no. | Driver | Adapter | Tube | Diameter [mm]* | max. load | Manufacturer |
|----------|---------|---------|--------------------------------|----------------|-----------|--------------|
| M45F845 | M45E584 | M45E585 | Round tube with groove profile | 65 | 40 Nm | Bandalux |



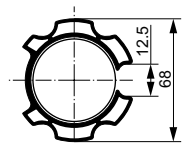
| Part no. | Driver | Adapter | Tube | Diameter [mm]* | max. load | Manufacturer |
|----------|---------|---------|----------------|----------------|-----------|--------------|
| M45F808 | M45E084 | M45E209 | Octagonal tube | 70 | 40 Nm | Italprofil |



| Part no. | Driver | Adapter | Tube | Diameter [mm]* | max. load | Manufacturer |
|----------|---------|---------|--------------------------------|----------------|-----------|--------------|
| M45F851 | M45E486 | M45E580 | Round tube with groove profile | 70 | 40 Nm | Griesser |

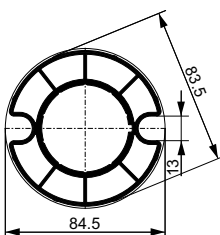
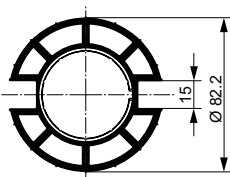
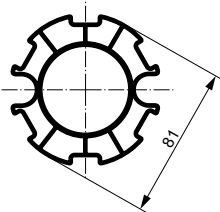
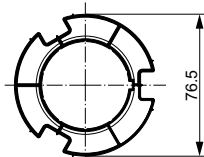
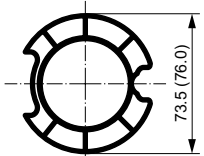
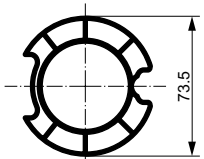
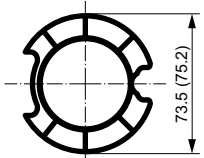
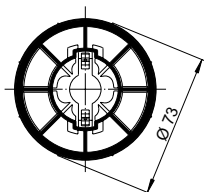


| Part no. | Driver | Adapter | Tube | Diameter [mm]* | max. load | Manufacturer |
|----------|---------|---------|--------------------------------|----------------|-----------|--|
| M45F803 | M45E159 | M45E160 | Round tube with groove profile | 70 | 40 Nm | MHZ, PVG, F.I.T.E.SOL, Welser, Mitjavila, Italprofil |



| Part no. | Driver | Adapter | Tube | Diameter [mm]* | max. load | Manufacturer |
|----------|---------|---------|--------------------------------|----------------|-----------|--------------|
| M45F827 | M45E456 | M45E457 | Round tube with groove profile | 70 | 40 Nm | Simbac |

* Outer tube diameter or standard commercial designation on the market



| Part no. | Driver | Adapter | Tube | Diameter [mm]* | max. load | Manufacturer |
|----------|---------|---------|------------|----------------|-----------|--------------|
| M45F812 | M45E274 | M45E275 | Round tube | 78 | 40 Nm | - |

| Part no. | Driver | Adapter | Tube | Diameter [mm]* | max. load | Manufacturer |
|----------|---------|---------|--------------------------------|----------------|-----------|--|
| M45F804 | M45E109 | M45E156 | Round tube with groove profile | 78 | 50 Nm | MHZ, PVG, F.I.T.E.SOL, Simbac, Welser, Dick, Hocoplast/WO&WO, Italprofil |

| Part no. | Driver | Adapter | Tube | Diameter [mm]* | max. load | Manufacturer |
|----------|---------|---------|------|----------------|-----------|--------------|
| M45F816 | M45E093 | M45E094 | | 78 | 50 Nm | - |

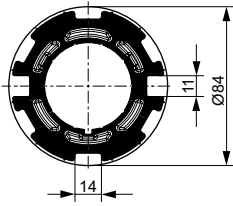
| Part no. | Driver | Adapter | Tube | Diameter [mm]* | max. load | Manufacturer |
|----------|---------|---------|--------------------------------|----------------|-----------|--------------|
| M45F819 | M45E093 | M45E156 | Round tube with groove profile | 78 | 50 Nm | Döhner |

| Part no. | Driver | Adapter | Tube | Diameter [mm]* | max. load | Manufacturer |
|----------|---------|---------|--------------------------------|----------------|-----------|-----------------|
| M45F811 | M45E248 | M45E249 | Round tube with groove profile | 80 | 50 Nm | Optinut, Welser |

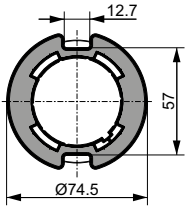
| Part no. | Driver | Adapter | Tube | Diameter [mm]* | max. load | Manufacturer |
|----------|---------|---------|--------------------------------|----------------|-----------|--|
| M45F805 | M45E157 | M45E158 | Round tube with groove profile | 85 | 50 Nm | F.I.T.E.SOL, Hocoplast/WO&WO, Italprofil |

| Part no. | Driver | Adapter | Tube | Diameter [mm]* | max. load | Manufacturer |
|----------|---------|---------|--------------------------------|----------------|-----------|--|
| M45F815 | M45E391 | M45E392 | Round tube with groove profile | 85 | 50 Nm | PVG (after change), Welser, Simbac (no special profiles) |

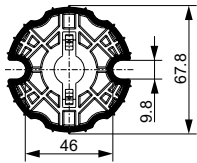
| Part no. | Driver | Adapter | Tube | Diameter [mm]* | max. load | Manufacturer |
|----------|---------|---------|------|----------------|-----------|--------------|
| M45F835 | M45E089 | M45E090 | | 85 | 50 Nm | PVG |



| Part no. | Driver | Adapter | Tube | Diameter [mm]* | max. load | Manufacturer |
|----------|---------|---------|--------------------------------|----------------|-----------|--------------|
| M45F852 | M45E548 | M45E581 | Round tube with groove profile | 85 | 50 Nm | Griesser |

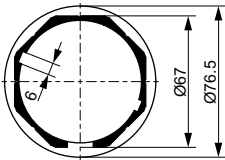


| Part no. | Driver | Adapter | Tube | Diameter [mm]* | max. load | Manufacturer |
|----------|---------|---------|--------------------------------|----------------|-----------|----------------|
| M45F828 | M45E462 | M45E537 | Round tube with groove profile | 78 | 50 Nm | Storma, Renson |

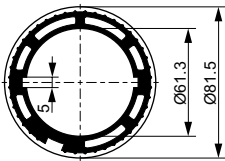


| Part no. | Driver | Adapter | Tube | Diameter [mm]* | max. load | Manufacturer |
|----------|---------|---------|--------------------------------|----------------|-----------|----------------|
| M45F831 | M45E486 | | Round tube with groove profile | 70 | 50 Nm | Storma, Renson |

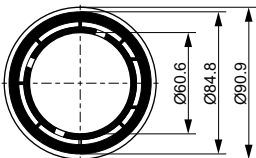
M59F... | Adapters and drivers for 59 mm motors



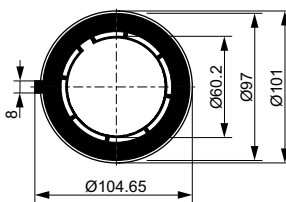
| Part no. | Driver | Adapter | Tube | Diameter [mm]* | max. load | Manufacturer |
|----------|---------|---------|----------------|----------------|-----------|--------------|
| M59F800 | M59K008 | M59K007 | Octagonal tube | 70 | 140 Nm | - |



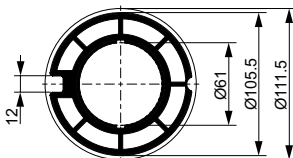
| Part no. | Driver | Adapter | Tube | Diameter [mm]* | max. load | Manufacturer |
|----------|---------|---------|--------------------------------|----------------|-----------|--------------|
| M59F801 | M59K010 | M59K009 | Round tube with groove profile | 82 | 140 Nm | - |



| Part no. | Driver | Adapter | Tube | Diameter [mm]* | max. load | Manufacturer |
|----------|---------|---------|--------------------------------|----------------|-----------|--------------|
| M59F802 | M59K014 | M59K012 | Round tube with groove profile | 84 | 140 Nm | - |



| Part no. | Driver | Adapter | Tube | Diameter [mm]* | max. load | Manufacturer |
|----------|---------|---------|--------------------------------|----------------|-----------|--------------|
| M59F803 | M59K016 | M59K015 | Round tube with groove profile | 97 | 140 Nm | - |



| Part no. | Driver | Adapter | Tube | Diameter [mm]* | max. load | Manufacturer |
|----------|---------|---------|--------------------------------|----------------|-----------|--------------|
| M59F804 | M59K018 | M59K017 | Round tube with groove profile | 106 | 140 Nm | - |

M56.... | Connecting cables, black



Characteristics

- Various plug and connection ends available
- Suitable for indoor and outdoor use
- UV-resistant
- Halogen-free
- Temperature range: -25 °C to 60 °C
- Cable designation: 05RR-F 4G 0.75mm²

| Part no. | Length [cm] | Cable end A | Cable end B | Note |
|----------|-------------|-------------------------------|-----------------------|--|
| M56K067 | 90 | GEIGER plug | Open end cable | - |
| M56E386 | 200 | GEIGER plug | Open end cable | - |
| M56E219 | 300 | GEIGER plug | Open end cable | - |
| M56E454 | 300 | GEIGER plug | Open end cable | Delivery unit: 25 pcs. |
| M56E427 | 500 | GEIGER plug | Open end cable | - |
| M56E623 | 30 | GEIGER plug | Hirschmann STAS3 plug | - |
| M56K066 | 50 | GEIGER plug | Hirschmann STAS3 plug | - |
| M56K042 | 90 | GEIGER plug | Hirschmann STAS3 plug | - |
| M56E378 | 150 | GEIGER plug | Hirschmann STAS3 plug | - |
| M56E399 | 150 | Hirschmann STAK3 cable socket | Open end cable | - |
| M56E587 | 500 | Hirschmann STAK3 cable socket | Open end cable | - |
| M56E281 | 200 | Hirschmann STAK3 cable socket | Hirschmann STAS3 plug | - |
| M56E273 | 30 | Hirschmann STAS3 plug | Open end cable | - |
| M56K455 | 30 | GEIGER plug | Hirschmann STAS3 plug | Changed rotation direction |
| M56E699 | 300 | GEIGER plug | Open end cable | For SOLIDline AIR drives, delivery unit: 25 pcs. |
| M56E799 | 500 | GEIGER plug | Open end cable | For SOLIDline AIR drives, delivery unit: 25 pcs. |

Further cable lengths on request.

M56E4.. | Connecting cables, white



Characteristics

- Suitable for indoor and outdoor use
- UV-resistant
- Not halogen-free
- Temperature range: -25 °C to 60 °C
- Cable designation: 05RN-F 4G 0.75mm²

| Part no. | Length [cm] | Cable end A | Cable end B |
|----------|-------------|-------------|----------------|
| M56E409 | 300 | GEIGER plug | Open end cable |

M56E41. | Connecting cables made of PVC, white



Characteristics

- Various plug and connection ends available
- For indoor use only
- Not UV-resistant
- Not halogen-free
- Temperature range: -5 °C to 60 °C
- Cable designation: H05VV-F 4G 0.75mm²

| Part no. | Length [cm] | Cable end A | Cable end B |
|----------|-------------|-------------|----------------|
| M56E417 | 90 | GEIGER plug | Open end cable |
| M56E418 | 300 | GEIGER plug | Open end cable |

Further cable lengths on request.

M56... | Setting switch



Note

- A 5-wire setting switch M56F152 or M56F153 is required for SMI motor
- SMI being a standard, any setting switch of the SMI group can be used

| Part no. | Description |
|----------|--|
| M56F154 | with service terminal (D) / 4-wire |
| M56B265 | Adaptation cable with service terminal and STAS3 |
| M56E399 | Adaptation cable with STAK3 and open cable end, 150 cm |
| M56E658 | Adaptation cable with STAK4 and open cable end, 150 cm |

M56K... | Hirschmann 3-pole connections



Note

- Delivery without cable

| Part no. | Description |
|----------|-------------------------------|
| M56K075 | Hirschmann STAK3 cable socket |
| M56K078 | Hirschmann STAS3 plug |
| M56K079 | Hirschmann STAS3 bracket |

GF2900 | Handheld transmitter Remote AIR



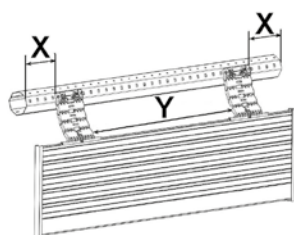
Characteristics

- 3 channels
- Feedback from the drive via a coloured LED
- Control of the sun control system

Application

- Setting and operating the sun protection system

M45F95. | Anti-lift devices for mini and maxi profiles



X = min. 30 mm Y = min. 400 mm
max. 80 mm max. 600 mm

Characteristics

- High-strength plastic
- Available as 2 and 3- unit models
- Available for mini and maxi profiles
- Available as snap-in attachment or screw mounting version

Note

- Please observe the installation instructions!

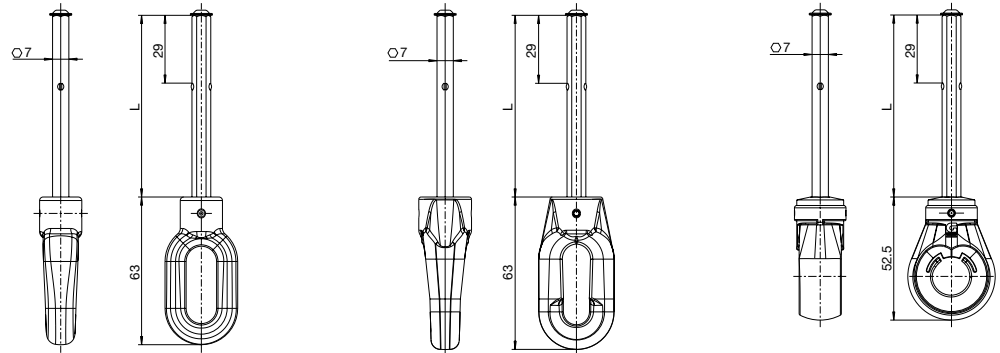
| Part no. | Profile/rod | Elements | Note |
|----------|--------------|------------|--------------|
| M45F950 | Mini profile | 2-elements | for clipping |
| M45F951 | Mini profile | 3-elements | for clipping |
| M45F953 | Mini profile | 2-elements | for screwing |
| M45F954 | Mini profile | 3-elements | for screwing |
| M45F956 | Maxi profile | 2-elements | for clipping |
| M45F957 | Maxi profile | 3-elements | for clipping |
| M45F959 | Maxi profile | 2-elements | for screwing |
| M45F960 | Maxi profile | 3-elements | for screwing |

M45F3.. | Extension with eyelet for manual override crank



Characteristics

- For TEClime motors with NHK function
- Awning cranks for operation can be found in the chapter "Textile sun protection"

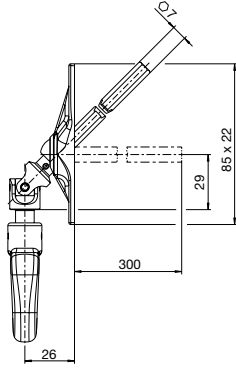


| Part no. | Length [L] | Drive ▲ | Output ▼ |
|----------|------------|--------------|----------|
| M45F370 | 60 mm | ☉ □ RAL 9016 | ● 7 mm |
| M45F373 | 60 mm | ☉ □ RAL 7035 | ● 7 mm |
| M45F376 | 60 mm | ☉ ■ RAL 9005 | ● 7 mm |
| M45F371 | 100 mm | ☉ □ RAL 9016 | ● 7 mm |
| M45F374 | 100 mm | ☉ □ RAL 7035 | ● 7 mm |
| M45F377 | 100 mm | ☉ ■ RAL 9005 | ● 7 mm |
| M45F372 | 165 mm | ☉ □ RAL 9016 | ● 7 mm |
| M45F375 | 165 mm | ☉ □ RAL 7035 | ● 7 mm |
| M45F378 | 165 mm | ☉ ■ RAL 9005 | ● 7 mm |
| M45F379 | 60 mm | ☉ □ RAL 9016 | ● 7 mm |
| M45F382 | 60 mm | ☉ □ RAL 7035 | ● 7 mm |
| M45F385 | 60 mm | ☉ ■ RAL 9005 | ● 7 mm |
| M45F380 | 100 mm | ☉ □ RAL 9016 | ● 7 mm |
| M45F383 | 100 mm | ☉ □ RAL 7035 | ● 7 mm |
| M45F386 | 100 mm | ☉ ■ RAL 9005 | ● 7 mm |
| M45F381 | 165 mm | ☉ □ RAL 9016 | ● 7 mm |
| M45F384 | 165 mm | ☉ □ RAL 7035 | ● 7 mm |
| M45F387 | 165 mm | ☉ ■ RAL 9005 | ● 7 mm |
| M45F392 | 60 mm | ☉ Zinc | ● 7 mm |
| M45F393 | 100 mm | ☉ Zinc | ● 7 mm |
| M45F394 | 165 mm | ☉ Zinc | ● 7 mm |
| M45F402 | 250 mm | ☉ Zinc | ● 7 mm |
| M45F403 | 400 mm | ☉ Zinc | ● 7 mm |

816F0.... | Spherical bearing 45°

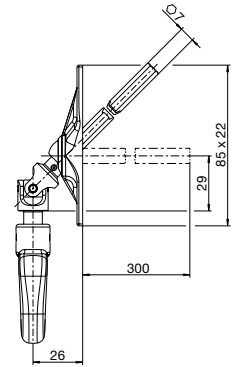
Characteristics

- For TEClime motors with NHK function
- Universal plates made of die cast zinc, 22 x 85 mm
- Further spherical bearings on request
- With zinc eyelet
- Awning cranks for operation can be found in the chapter "Textile sun protection"



| Part no. | Colour | Profile/rod | Holes |
|------------|---------------|-------------|-------|
| 816F018001 | nickel-plated | 7 mm | 2 |

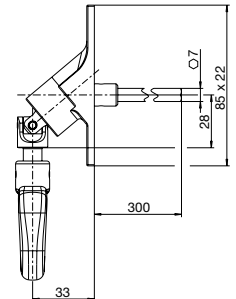
| Part no. | Colour | Profile/rod | Holes |
|------------|---------------|-------------|-------|
| 816F027901 | nickel-plated | 7 mm | 3 |



816F16.... | Spherical bearing 90°

Characteristics

- For TEClime motors with NHK function
- Universal plates made of die cast zinc, 22 x 85 mm
- Further spherical bearings on request
- With zinc eyelet
- Awning cranks for operation can be found in the chapter "Textile sun protection"



| Part no. | Colour | Profile/rod | Holes |
|------------|---------------|-------------|-------|
| 816F168001 | nickel-plated | 7 mm | 2 |

Gerhard Geiger GmbH & Co. KG
Schleifmühle 6 | D-74321 Bietigheim-Bissingen
T +49 (0) 7142 9380 | F +49 (0) 7142 938 230
info@geiger.de | www.geiger.de

GEIGER
ANTRIEBSTECHNIK