



# SOLIDline

TUBULAR MOTORS

**GEIGER**  
ANTRIEBSTECHNIK



# SIMPLY BETTER PROTECTION



*Rolling shutters act like a coat for your house - they are simply perfect for protecting it from undesired external influences. Their sturdy curtains keep out extreme temperatures, bad weather, and noise. They equally keep out prying eyes or uninvited guests. They can be operated manually, wirelessly, or fully automatically in a smart home.*

<i>Design</i>	—	<b>36</b>
The right look - good design is the result of maximum function at GEIGER.		
<i>Protection</i>	—	<b>37</b>
Carefree enjoyment - our rolling shutter drives not only protect the blinds from damage, but can also make break-ins more difficult.		
<i>Connection</i>	—	<b>38</b>
The gateway to the smart world - every rolling shutter can be connected to the right GEIGER drive.		
<i>Mounting</i>	—	<b>38</b>
Ready for use in the blink of an eye - thanks to customised mounting components, our drives are installed quickly.		
<i>Smooth operation</i>	—	<b>39</b>
Silence is a luxury - GEIGER minimises the noise level of its drives.		
<i>Drive overview</i>	—	<b>40</b>

# FEATURES

## DESIGN

*The right look - function and design in harmony at GEIGER. The more precisely a rolling shutter operates and the more individually it supports the appearance of a building, the higher the quality of its appearance.*

### Synchronised position

Our drives switch off identically in the upper end position thanks to GEIGER motor intelligence. This means that adjacent blinds are at the same height after stopping in the upper end position - even if the rolling shutters are of different sizes or widths. A visual plus for every building.

### Referencing

The motor control unit will check the rolling shutter end positions in particular cycles with the optional referencing function. This keeps the blind moving precisely at the originally set distances even after years, even if the winding behaviour changes due to external influences. Follow-up costs for manufacturers and end customers are reduced to a minimum and the longevity of the systems is maximised.

---

## PROTECTION

*Carefree enjoyment - with smart drives that effectively protect against uninvited guests and also automatically protect the sun protection from wear and damage. This not only alleviates your stress, it is also easy on your wallet.*



### Soft position

The GEIGER soft position does not stop the blind by torque cut-off when retracting, but stops it shortly before reaching the upper end position. It prevents permanent tension or pressure on the rolling shutter curtain. This protects the rolling shutter box, prevents the curtain from bulging, and keeps it from freezing in its upper end position in winter.



### Burglary resistance

Our rolling shutter drives effectively prevent unauthorised access in combination with an anti-lift device. Burglars would have to work against the motor force when pushing up the rolling shutter due to a constant torque cut-off in the DOWN direction. Motor power and anti-lift device together make it almost impossible to push the rolling shutter up from the outside.



### Anti-freeze protection

The anti-freeze protection adds some extra safety in sub-zero temperatures: End rails frozen to the window sill are recognised immediately. The drive stops to prevent damage to the blinds and keep them intact.



### Obstacle detection in UP direction

If the sun protection moves to the upper end position, it is automatically stopped if there is resistance in the travel path. This also applies to weather-related influences such as coarse dirt. The sensitive power cut-off registers obstacles, protects the blind and ensures long-lasting sun protection.

# FEATURES

## CONNECTION

*The gateway to the smart world. Every rolling shutter can be easily connected to matching GEIGER drive, all the way to integration into a fully automated smart home. Sun protection networks increase functionality, safety, and comfort throughout the home.*

### GEIGER radio 2.0

The unidirectional radio system (433 MHz) with its long range makes it possible to reliably address even relatively distant receivers. Accidental changes to the end positions/motor settings by the end user are prevented by its delimited programming level (programming range/close range). A wide range of accessories such as various handheld transmitters and sensors round off the GEIGER radio program.

### Wireless AIR technology

Our innovative AIR radio technology is able to cover long distances and even the most labyrinthine buildings with MESH technology. All AIR drives are equipped with bidirectional radio. Commands are thus not only received, but also confirmed after execution; otherwise, an error message will be returned. AIR also makes the sun protection system Smart Home Ready: Connecting AIR drives to the Loxone miniserver will integrate the sun protection system into a full smart home control system. All integrated technical components complement each other in their functions - for more convenience, greater energy efficiency, and improved security.

## MOUNTING

*Quick and easy to use - simple handling is a matter of course for a GEIGER drive. We know how to make installation, maintenance, and operation of our products easier for our customers.*

### Plug & Play

Plug & Play puts an end to the tedious and time-consuming adjustment of end positions. Our smart drives enable extremely fast teach-in without adjustment cables: Moving to the bottom end position, correcting at need, raising the blind all the way, and switching off - done. Maintenance costs and service calls are reduced.



## Plug-in cables and tool-free mounting

Our drives have plug-in connection cables. Their motors can be connected to or disconnected from the mains in the blink of an eye during retrofitting or replacement. All of our fixation kits can be inserted and attached tool-free. This is because our installation accessories are developed in close co-operation with the rolling shutter manufacturers. We keep subsequent installation in mind from the development stage, customising our mounting accessories precisely to any requirements our customers may have.



## Sophisticated fastening systems

We offer roller bearings, amongst other things, for rolling shutters. This means that the hanging can be unrolled in the open state even if the motor fails. Our folding engine bearers can be fixed without tools and without having to screw the bearing plate to the rolling shutter box.

---

## SMOOTH RUNNING

*Silence is a luxury - and GEIGER keeps improving all of its drives to optimise smooth running. Less material friction equals quieter drives. Once the sun protection is virtually inaudible, it guarantees a more comfortable atmosphere.*



## Optimised product design

We reduce noise emissions right where the develop: in the mechanics of the engine, transmission, and brakes and in transmission of vibrations and structure-borne noise to adjacent elements. Optimisation ranges from product development and material selection to manufacturing processes and includes all drive components.

We strive to reduce friction between all components, absorb sound with softer materials and dampen vibrations.

## MOTOR MATRIX SOLIDline

	Touch	Easy	Easy Radio	SoftPerfection-S	SoftPerfection-X01	X01 Radio
	Page 42	Page 44	Page 46	Page 48	Page 50	Page 52
<b>Application</b>						
Rolling shutter (without stopper + anti-lift devices)	■	■	■			
Rolling shutter (with stopper + anti-lift device)	■	■	■	■	■	■
Screens	■	■	■			
ZIP screens	■					
Facade awnings	■	■	■			
Open style folding arm awnings	■	■	■			
Cassette awning	■	■	■			
Conservatory shading	■	■	■			
<b>Design</b>						
Synchronised position		■	■	■	■	■
Referencing		■	■	■	■	■
Intermediate position						
<b>Hanging protection</b>						
Soft position		■	■		■	■
Burglary resistance*	■	■	■	■		
Anti-freeze protection		■	■	■	■	■
Obstacle detection (UP direction)		■	■	■	■	■
Blocking detection (DOWN direction)						
<b>Connection</b>						
AIR / Smart Home Ready						
GEIGER Radio 2.0			■			■
<b>Mounting</b>						
Plug & Play				■	■	■
Adjustment by control switch		■	■	■		
Plug-in cable	■	■	■	■	■	■
Tool-free mounting	■	■	■	■	■	■
Sophisticated fixing systems	■	■	■	■	■	■
<b>Smooth operation</b>						
Noise-optimised product design	■	■	■	■	■	■

\* only for use with anti-lift devices or fixed tube connectors

SoftPlus-Qi	Qi Radio	ZIP Perfection	ZIP Radio	XS5606 SoftPerfection-X01	Rescue-R Touch	Rescue-R SoftPerfection-X01
Page 54	Page 56	Page 58	Page 60	Page 62	Page 64	Page 64
					■	
				■	■	■
		■	■			
■	■					
■	■					
			■	■		■
■	■		■	■		■
■	■		■	■		■
	■		■			
		■	■	■		■
		■	■			
		■	■	■		■
■	■	■	■	■	■	■
■	■	■	■	■	■	■
■	■	■	■	■	■	■
■	■	■	■	■	■	■

SOLIDline

TECline

Accessories for tubular drives

GJ56..

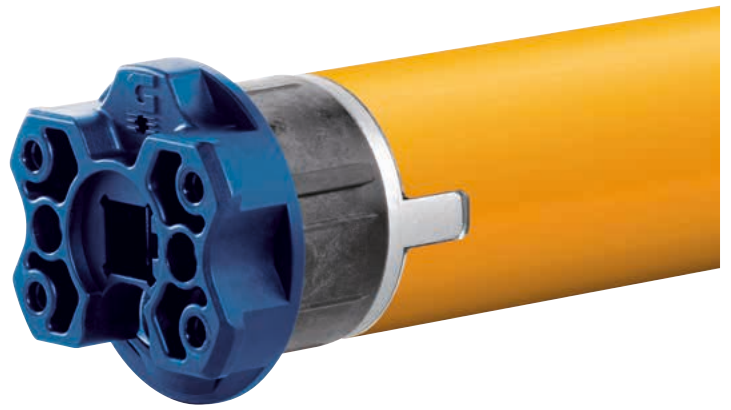
Accessories GJ56...

Wireless accessories

General information

# SOLIDline Touch

## Mechanical tubular motor Ø 45 mm



### Application:



Rolling shutters



Open style folding arm awnings



Screens

### Characteristics:

#### 1-button technology



Both end positions can be set precisely with just one button on the motor head.  
No more complications when setting the end positions.

#### Wind proof



The Touch has no obstacle detection. This allows the blind to move quickly to its protected upper end position in the event of a wind alarm in spite of strong gusts of wind.

### Product advantages:

- Mechanical limit switch
- Plug-in connection cable in different lengths
- Quick adjustment of the end positions without setting cable

### Options:

- Available with SOC or COM head
- Available with faster motor upon request

### Notices:

- Do not use switches with simultaneous UP/DOWN command
- Parallel connection not possible

### End position adjustment:

<b>TOP</b>	Stop on free position	<b>BOTTOM</b>	Stop on free position
------------	-----------------------	---------------	-----------------------

## Technical data:

Technical data tubular motor SOLIDline-SOC (GU45..)						
	GU4506	GU4510	GU4520	GU4530	GU4540	GU4550
Voltage	230V~/50Hz					
Current	0.36 A	0.47 A	0.63 A	0.8 A	1.0 A	1.0 A
Cos Phi (cosφ)	>0.95					
Inrush current (factor)	x 1.2					
Power	83 W	105 W	140 W	180 W	220 W	220 W
Torque	6 Nm	10 Nm	20 Nm	30 Nm	40 Nm	50 Nm
Speed	16 rpm	16 rpm	16 rpm	16 rpm	16 rpm	12 rpm
Limit switch-off range	38 revolutions					
Protection class	IP 44					
Total length [l] <sup>1)</sup>	509.5 mm	519.5 mm	549.5 mm	569.5 mm	589.5 mm	589.5 mm
Operating mode	S2 4 min	S2 4 min	S2 5 min	S2 4 min	S2 4 min	S2 4 min
Sound pressure level <sup>2)</sup>	39 dB(A)	39 dB(A)	41 dB(A)	41 dB(A)	43 dB(A)	-
Diameter	45 mm					
Weight	approx. 1.85 kg	approx. 1.90 kg	approx. 2.20 kg	approx. 2.40 kg	approx. 2.70 kg	approx. 2.70 kg
Humidity	dry, non-condensing					
Storage temperature	T = -15 °C ... +70 °C					

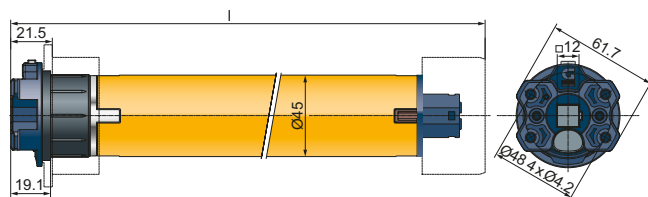
<sup>1)</sup> SOLIDline-COM + 0.5 mm

<sup>2)</sup> The average sound pressure level data are intended for guidance only. The values were determined by GEIGER at a distance of 1 m, with a hanging motor at idle speed and averaged over 10 seconds. There is no reference to any specific test standard.

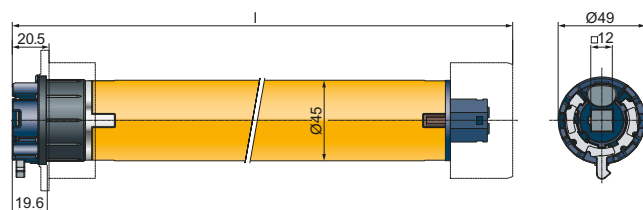
Subject to technical changes. Find information to the ambient temperature range of our GEIGER motors under [www.geiger.de](http://www.geiger.de).

## Drawings:

SOC:



COM:



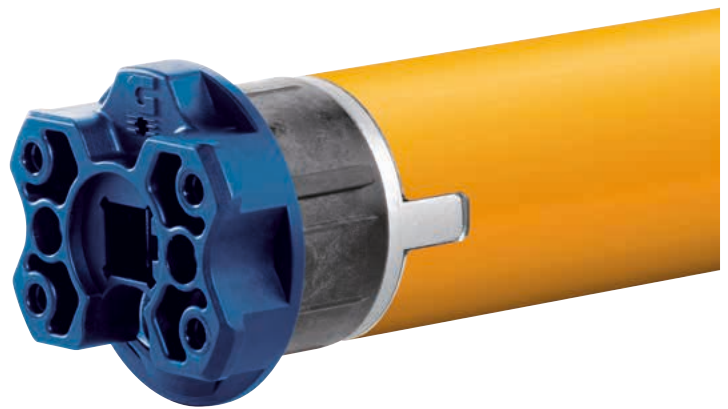
## Accessories:

	Engine bearer	124		Connection cables	134
	Adaptor/driver	130		Anti-lift devices	136
	Radio accessories	181			

# SOLIDline

## Easy

### Electronic tubular motor Ø 45 mm



## Application:



Rolling shutters



Open style folding arm awnings



Screens



Insect protection

## Characteristics:

### Soft position



The hanging stops before reaching its upper end position to protect the materials.

### Hanging protection

The integrated sensitive motor intelligence ensures that ...

#### ■ Antifreeze protection

... the hangings that are frozen to the windowsill are detected and not torn off.



■ **Obstacle detection in UP direction**... the system is protected during retraction.



### Synchronised position



Consistent switch-off behaviour is always guaranteed, even with different hanging widths or heights. No rolling shutters hanging differently in their upper end positions anymore.

### Burglary resistance



A constant torque cut-off in the DOWN direction allows the rolling shutter to develop its burglary-resistant effect. (Only possible in combination with anti-lifting devices.)

### Referencing



Every 50 cycles, a reference run is carried out to check whether the end positions are right. For this purpose the hanging moves to the upper end position until the drive switches off to torque. The end positions are checked and corrected if necessary.

## Product advantages:

- Electronic limit stop
- Automatic detection left and right installation
- Can be connected in parallel
- Plug-in connection cable in different lengths

## Notices:

- Do not use switches with simultaneous UP/DOWN command
- Programming of the end positions possible via any adjustment cable. Any setting cable that has a programming button or permits simultaneous UP/DOWN commands can be used.

## Options:

- Available with SOC or COM head
- Available with faster motor upon request

## End position adjustment:

TOP	*Stop on torque	BOTTOM	*Stop on torque
	Stop on free position		Stop on free position

\* Stopper and anti-lift device/rigid tube connector

## Technical data:

Technical data tubular motor SOLIDline-SOC (GU45..)					
	GU4510	GU4520	GU4530	GU4540	GU4550
Voltage	230V~/50Hz				
Current	0.47 A	0.63 A	0.8 A	1.0 A	1.0 A
Cos Phi (cosφ)	>0.95				
Inrush current (factor)	x 1.2				
Power	105 W	140 W	180 W	220 W	220 W
Torque	10 Nm	20 Nm	30 Nm	40 Nm	50 Nm
Speed	16 rpm	16 rpm	16 rpm	16 rpm	12 rpm
Limit switch-off range	> 200 revolutions				
Protection class	IP 44				
Total length [l] <sup>1)</sup>	519.5 mm	549.5 mm	569.5 mm	589.5 mm	589.5 mm
Operating mode	S2 4 min	S2 5 min	S2 4 min	S2 4 min	S2 4 min
Sound pressure level <sup>2)</sup>	39 dB(A)	41 dB(A)	41 dB(A)	43 dB(A)	-
Diameter	45 mm				
Weight	approx. 1.90 kg	approx. 2.20 kg	approx. 2.40 kg	approx. 2.70 kg	approx. 2.70 kg
Humidity	dry, non-condensing				
Storage temperature	T = -15 °C ... +70 °C				

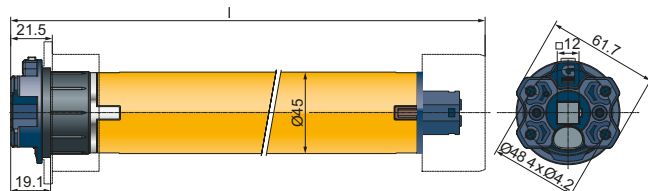
<sup>1)</sup> SOLIDline-COM + 0.5 mm

<sup>2)</sup> The average sound pressure level data are intended for guidance only. The values were determined by GEIGER at a distance of 1 m, with a hanging motor at idle speed and averaged over 10 seconds. There is no reference to any specific test standard.

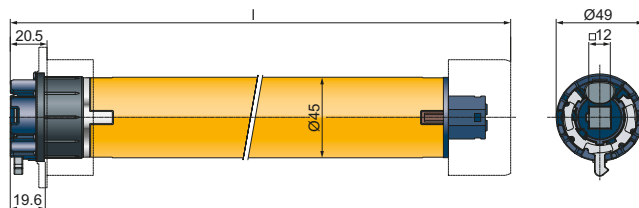
Subject to technical changes. Find information to the ambient temperature range of our GEIGER motors under [www.geiger.de](http://www.geiger.de).

## Drawings:

### SOC:



### COM:



## Accessories:

	Engine bearer	124		Connection cables	134
	Adaptor/driver	130		Anti-lift devices	136
	Radio accessories	181			

# SOLIDline Easy Radio

Electronic tubular  
motor Ø 45 mm



## Application:



Rolling shutters



Open style folding arm awnings



Screens



Insect protection

## Characteristics:

### Soft position



The hanging stops before reaching its upper end position to protect the materials.

### Hanging protection

The integrated sensitive motor intelligence ensures that ...

#### ■ Antifreeze protection

... the hangings that are frozen to the windowsill are detected and not torn off.



■ **Obstacle detection in UP direction...** the system is protected during retraction.



### Synchronised position



Consistent switch-off behaviour is always guaranteed, even with different hanging widths or heights. No rolling shutters hanging differently in their upper end positions anymore.

### Operation



The motor can be operated using a handheld transmitter or alternatively using a (wired) control switch.

### Burglary resistance



A constant torque cut-off in the DOWN direction allows the rolling shutter to develop its burglary-resistant effect. (Only possible in combination with anti-lifting devices.)

### Referencing



Every 50 cycles, a reference run is carried out to check whether the end positions are right. For this purpose the hanging moves to the upper end position until the drive switches off to torque. The end positions are checked and corrected if necessary.

### GEIGER Radio 2.0



The unidirectional radio system offers a long range and enables secure communication with remote receivers.

## Product advantages:

- Electronic limit stop
- Automatic detection left and right installation
- Can be connected in parallel
- Plug-in connection cable in different lengths

## Notices:

- Do not use switches with simultaneous UP/DOWN command
- Programming of the end positions possible via any adjustment cable. Any setting cable that has a programming button or permits simultaneous UP/DOWN commands can be used.

## Options:

- Available with SOC or COM head
- Available with faster motor upon request

## End position adjustment:

TOP	*Stop on torque	BOTTOM	*Stop on torque
	Stop on free position		Stop on free position

\* Stopper and anti-lift device/rigid tube connector

## Technical data:

Technical data tubular motor SOLIDline-SOC (GU45..)					
	GU4510	GU4520	GU4530	GU4540	GU4550
Voltage	230V~/50Hz				
Current	0.47 A	0.63 A	0.8 A	1.0 A	1.0 A
Cos Phi (cosφ)	>0.95				
Inrush current (factor)	x 1.2				
Power	105 W	140 W	180 W	220 W	220 W
Torque	10 Nm	20 Nm	30 Nm	40 Nm	50 Nm
Speed	16 rpm	16 rpm	16 rpm	16 rpm	12 rpm
Limit switch-off range	> 200 revolutions				
Protection class	IP 44				
Radio frequency	433 MHz				
Total length [l] <sup>1)</sup>	519.5 mm	549.5 mm	569.5 mm	589.5 mm	589.5 mm
Operating mode	S2 4 min	S2 5 min	S2 4 min	S2 4 min	S2 4 min
Sound pressure level <sup>2)</sup>	39 dB(A)	41 dB(A)	41 dB(A)	43 dB(A)	-
Diameter	45 mm				
Radio frequency	433 MHz				
Weight	approx. 1.90 kg	approx. 2.20 kg	approx. 2.40 kg	approx. 2.70 kg	approx. 2.70 kg
Humidity	dry, non-condensing				
Storage temperature	T = -15 °C ... +70 °C				

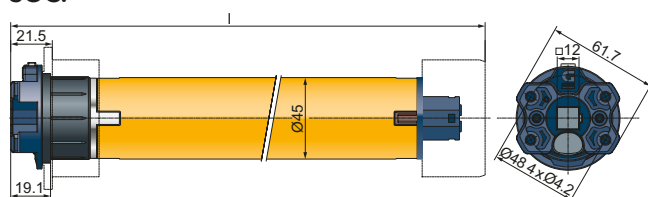
<sup>1)</sup> SOLIDline-COM + 0.5 mm

<sup>2)</sup> The average sound pressure level data are intended for guidance only. The values were determined by GEIGER at a distance of 1 m, with a hanging motor at idle speed and averaged over 10 seconds. There is no reference to any specific test standard.

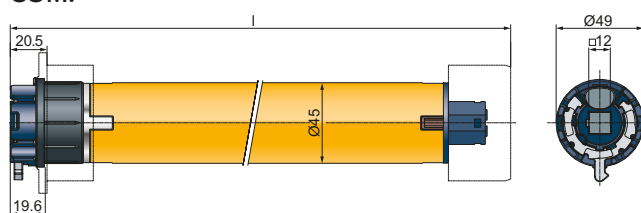
Subject to technical changes. Find information to the ambient temperature range of our GEIGER motors under [www.geiger.de](http://www.geiger.de).

## Drawings:

SOC:



COM:



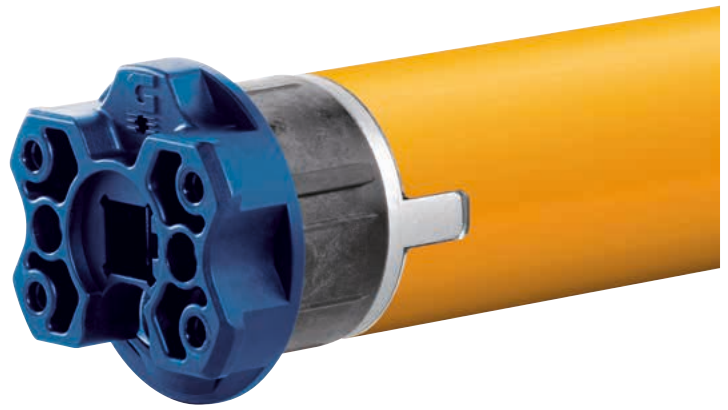
## Accessories:

	Engine bearer	124		Connection cables	134
	Adaptor/driver	130		Anti-lift devices	136
	Radio accessories	181			

# SOLIDline

## SoftPerfection-S

### Electronic tubular motor Ø 45 mm



## Application:



Rolling shutter

## Special features:

### Soft position



The hanging stops before reaching its upper end position to protect the materials.

### Synchronised position



Consistent switch-off behaviour is always guaranteed, even with different hanging widths or heights. No rolling shutters hanging differently in their upper end positions anymore.

### Burglary resistance



A constant torque cut-off in the DOWN direction allows the rolling shutter to develop its burglary-resistant effect. (Only possible in combination with anti-lifting devices.)

### Plug & Play



Autonomous detection of the end positions without time-consuming adjustment work in the installation procedure. Done in only one up and down movement. (Only when using stoppers and anti-lift devices).

### Hanging protection

The integrated sensitive motor intelligence ensures that ...

#### ■ Antifreeze protection

... the hangings that are frozen to the windowsill are detected and not torn off.



#### ■ Obstacle detection in UP direction... the system is protected during retraction.



### Referencing



Every 50 cycles, a reference run is carried out to check whether the end positions are right. For this purpose the hanging moves to the upper end position until the drive switches off to torque. The end positions are checked and corrected if necessary.

## Product advantages:

- Electronic limit stop
- Automatic detection left and right installation
- Can be connected in parallel
- Plug-in connection cable in different lengths
- In learning mode already on delivery

## Notices:

- Do not use switches with simultaneous UP/DOWN command
- Rigid tube connectors and stoppers are essential
- Adjustment of end positions possible via control switch

## Options:

- Available with SOC or COM head
- Available with faster motor upon request

## End position adjustment:



\* Stopper and anti-lift device/rigid tube connector

## Technical data:

Technical data tubular motor SOLIDline-SOC (GU45..)				
	GU4510	GU4520	GU4530	GU4540
Voltage	230V~/50Hz			
Current	0.47 A	0.63 A	0.8 A	1.0 A
Cos Phi (cosφ)	>0.95			
Inrush current (factor)	x 1.2			
Power	105 W	140 W	180 W	220 W
Torque	10 Nm	20 Nm	30 Nm	40 Nm
Speed	16 rpm			
Limit switch-off range	> 200 revolutions			
Protection class	IP 44			
Total length [l] <sup>1)</sup>	519.5 mm	549.5 mm	569.5 mm	589.5 mm
Operating mode	S2 4 min	S2 5 min	S2 4 min	S2 4 min
Sound pressure level <sup>2)</sup>	39 dB(A)	41 dB(A)	41 dB(A)	43 dB(A)
Diameter	45 mm			
Weight	approx. 1.9 kg	approx. 2.2 kg	approx. 2.4 kg	approx. 2.7 kg
Humidity	dry, non-condensing			
Storage temperature	T = -15 °C ... +70 °C			

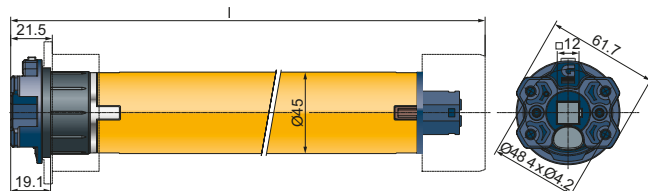
<sup>1)</sup> SOLIDline-COM + 0.5 mm

<sup>2)</sup> The average sound pressure level data are intended for guidance only. The values were determined by GEIGER at a distance of 1 m, with a hanging motor at idle speed and averaged over 10 seconds. There is no reference to any specific test standard.

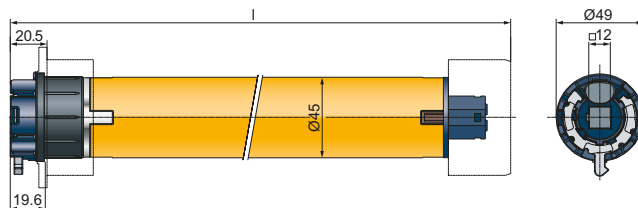
Subject to technical changes. Find information to the ambient temperature range of our GEIGER motors under [www.geiger.de](http://www.geiger.de).

## Drawings:

SOC:



COM:



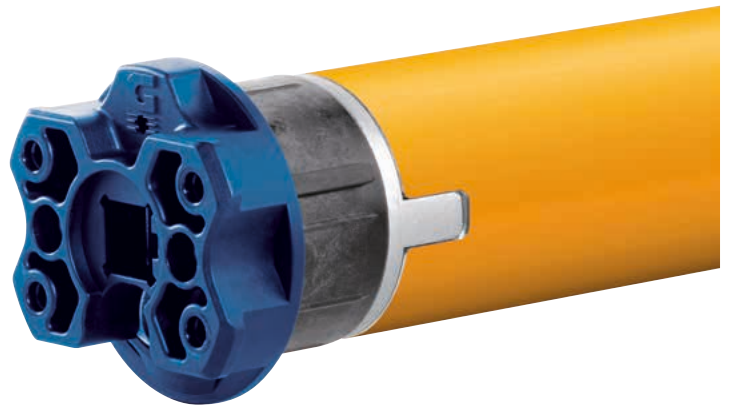
## Accessories:

	Engine bearer	124		Connection cables	134
	Adaptor/driver	130		Anti-lift devices	136
	Radio accessories	181			

# SOLIDline

## SoftPerfection-X01

Electronic tubular motor Ø 45 mm



### Application:



Rolling shutter

### Characteristics:

#### Delayed teaching



The motor does not learn its actual end positions until the fifth driving cycle.

#### Soft position



The hanging stops before reaching its upper end position to protect the materials.

#### Synchronised position



Consistent switch-off behaviour is always guaranteed, even with different hanging widths or heights. No rolling shutters hanging differently in their upper end positions anymore

#### Plug & Play



Autonomous detection of the end positions without time-consuming adjustment work in the installation procedure. Done in only one up and down movement. (Only when using stoppers and anti-lift devices).

#### Hanging protection

The integrated sensitive motor intelligence ensures that ...

##### ■ Antifreeze protection

... the hangings that are frozen to the windowsill are detected and not torn off.



##### ■ Obstacle detection in UP direction... the system is protected during retraction.



#### Referencing



Every 50 cycles, a reference run is carried out to check whether the end positions are right. For this purpose the hanging moves to the upper end position until the drive switches off to torque. The end positions are checked and corrected if necessary.

### Product advantages:

- Electronic limit stop
- Automatic detection left and right installation
- Can be connected in parallel
- Plug-in connection cable in different lengths
- In learning mode already on delivery

### Notices:

- Do not use switches with simultaneous UP/DOWN command
- Rigid tube connectors and stoppers are essential
- Adjustment of end positions possible via control switch

### Options:

- Available with SOC or COM head
- Available with faster motor upon request

### End position adjustment:

**TOP** \*Stop on torque **BOTTOM** \*Stop on torque

\* Stopper and anti-lift device/rigid tube connector

## Technical data:

Technical data tubular motor SOLIDline-SOC (GU45..)					
	GU4510	GU4520	GU4530	GU4540	GU4550
Voltage	230V~/50Hz				
Current	0.47 A	0.63 A	0.8 A	1.0 A	1.0 A
Cos Phi (cosφ)	>0.95				
Inrush current (factor)	x 1.2				
Power	105 W	140 W	180 W	220 W	220 W
Torque	10 Nm	20 Nm	30 Nm	40 Nm	50 Nm
Speed	16 rpm	16 rpm	16 rpm	16 rpm	12 rpm
Limit switch-off range	> 200 revolutions				
Protection class	IP 44				
Total length [l] <sup>1)</sup>	519.5 mm	549.5 mm	569.5 mm	589.5 mm	589.5 mm
Operating mode	S2 4 min	S2 5 min	S2 4 min	S2 4 min	S2 4 min
Sound pressure level <sup>2)</sup>	39 dB(A)	41 dB(A)	41 dB(A)	43 dB(A)	-
Diameter	45 mm				
Weight	approx. 1.90 kg	approx. 2.20 kg	approx. 2.40 kg	approx. 2.70 kg	approx. 2.70 kg
Humidity	dry, non-condensing				
Storage temperature	T = -15 °C ... +70 °C				

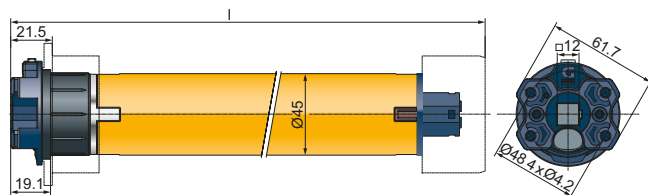
<sup>1)</sup> SOLIDline-COM + 0.5 mm

<sup>2)</sup> The average sound pressure level data are intended for guidance only. The values were determined by GEIGER at a distance of 1 m, with a hanging motor at idle speed and averaged over 10 seconds. There is no reference to any specific test standard.

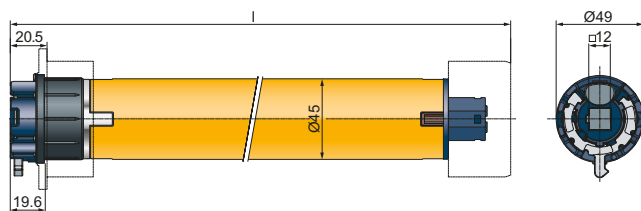
Subject to technical changes. Find information to the ambient temperature range of our GEIGER motors under [www.geiger.de](http://www.geiger.de).

## Drawings:

SOC:



COM:

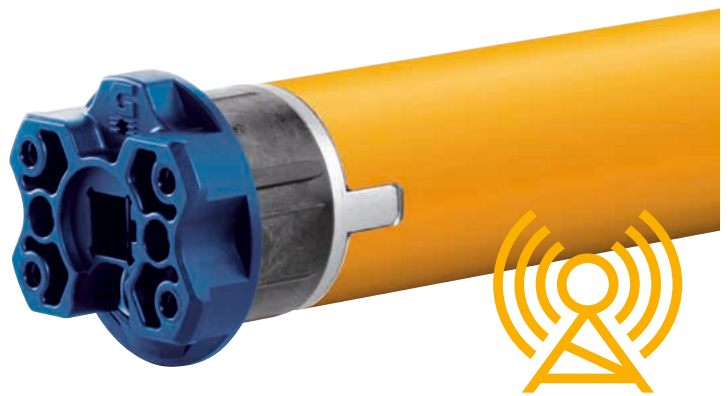


## Accessories:

	Engine bearer	124		Connection cables	134
	Adaptor/driver	130		Anti-lift devices	136
	Radio accessories	181			

## SOLIDline X01 Radio

Electronic tubular motor Ø  
45 mm with radio system



### Application:



Rolling shutter

### Characteristics:

#### Delayed teaching



The motor does not learn its actual end positions until the fifth driving cycle.

#### Soft position



The hanging stops before reaching its upper end position to protect the materials.

#### Synchronised position



Consistent switch-off behaviour is always guaranteed, even with different hanging widths or heights. No rolling shutters hanging differently in their upper end positions anymore

#### Plug & Play



Autonomous detection of the end positions without time-consuming adjustment work in the installation procedure. Done in only one up and down movement. (Only when using stoppers and anti-lift devices).

#### Operation



The motor can be operated using a handheld transmitter or alternatively using a (wired) control switch.

#### Hanging protection

The integrated sensitive motor intelligence ensures that ...

##### ■ Antifreeze protection

... the hangings that are frozen to the windowsill are detected and not torn off.



##### ■ Obstacle detection in UP direction... the system is protected during retraction.



#### Referencing



Every 50 cycles, a reference run is carried out to check whether the end positions are right. For this purpose the hanging moves to the upper end position until the drive switches off to torque. The end positions are checked and corrected if necessary.

#### GEIGER Radio 2.0



The unidirectional radio system offers a long range and enables secure communication with remote receivers.

### Product advantages:

- Electronic limit stop
- Automatic detection left and right installation
- Can be connected in parallel
- Plug-in connection cable in different lengths
- In learning mode already on delivery

### Notices:

- Do not use switches with simultaneous UP/DOWN command
- Rigid tube connectors and stoppers are essential
- Adjustment of end positions possible via control switch

### Options:

- Available with SOC or COM head
- Available with faster motor upon request

### End position adjustment:

TOP

\*Stop on torque

BOTTOM

\*Stop on torque

\* Stopper and anti-lift device/rigid tube connector

## Technical data:

Technical data tubular motor SOLIDline-SOC (GU45..)					
	GU4510	GU4520	GU4530	GU4540	GU4550
Voltage	230V~/50Hz				
Current	0.47 A	0.63 A	0.8 A	1.0 A	1.0 A
Cos Phi (cosφ)	>0.95				
Inrush current (factor)	x 1.2				
Power	105 W	140 W	180 W	220 W	220 W
Torque	10 Nm	20 Nm	30 Nm	40 Nm	50 Nm
Speed	16 rpm	16 rpm	16 rpm	16 rpm	12 rpm
Limit switch-off range	> 200 revolutions				
Protection class	IP 44				
Radio frequency	433 MHz				
Total length [l] <sup>1)</sup>	519.5 mm	549.5 mm	569.5 mm	589.5 mm	589.5 mm
Operating mode	S2 4 min	S2 5 min	S2 4 min	S2 4 min	S2 4 min
Sound pressure level <sup>2)</sup>	39 dB(A)	41 dB(A)	41 dB(A)	43 dB(A)	-
Diameter	45 mm				
Radio frequency	433 MHz				
Weight	approx. 1.90 kg	approx. 2.20 kg	approx. 2.40 kg	approx. 2.70 kg	approx. 2.70 kg
Humidity	dry, non-condensing				
Storage temperature	T = -15 °C ... +70 °C				

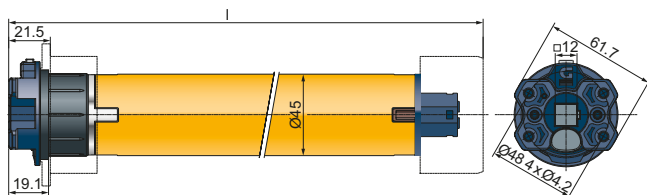
<sup>1)</sup> SOLIDline-COM + 0.5 mm

<sup>2)</sup> The average sound pressure level data are intended for guidance only. The values were determined by GEIGER at a distance of 1 m, with a hanging motor at idle speed and averaged over 10 seconds. There is no reference to any specific test standard.

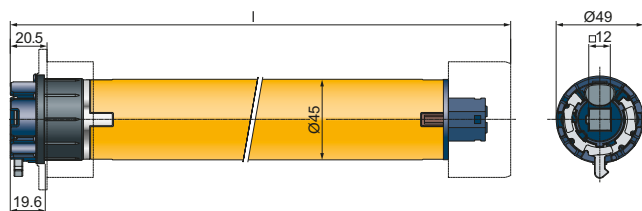
Subject to technical changes. Find information to the ambient temperature range of our GEIGER motors under [www.geiger.de](http://www.geiger.de).

## Drawings:

SOC:



COM:

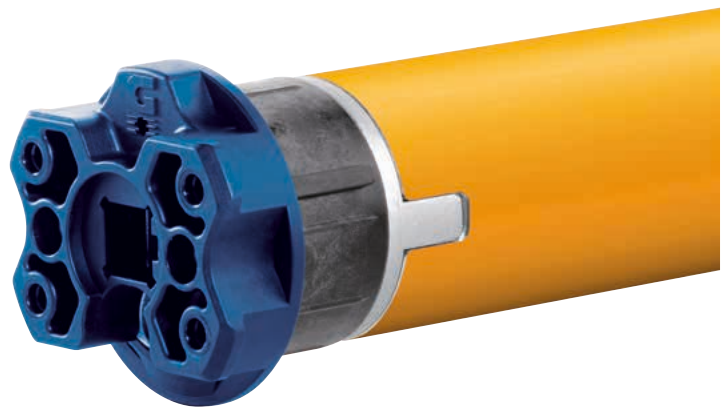


## Accessories:

	Engine bearer	124		Connection cables	134
	Adaptor/driver	130		Anti-lift devices	136
	Radio accessories	181			

# SOLIDline SoftPlus-Qi

## Electronic tubular motor Ø 45 mm



### Application:



Cassette awnings

### Characteristics:

#### Plug & Play



Autonomous detection of the upper end positions without time-consuming adjustment work in the installation procedure. Done in only one up and down movement.

#### Driving range detection



The motor recognises which driving range it is in while driving. As a result, it works with as much or as little power as is actually required in the respective driving range. The SoftPlus-Qi is exceptionally powerful in the folding point area of the awning, but particularly sensitive in the closing area. This ensures a long service life for the system.

#### Hanging protection

The integrated sensitive motor intelligence ensures that ...

##### ■ Obstacle detection in UP direction

... the system is protected during retraction.



#### Referencing



Every 50 cycles, a reference run is carried out to check whether the end positions are right. For this purpose the hanging moves to the upper end position until the drive switches off to torque. The end positions are checked and corrected if necessary.

### Product advantages:

- Electronic limit stop
- Automatic detection left and right installation
- Can be connected in parallel
- Plug-in connection cable in different lengths
- In learning mode already on delivery

### Options:

- Available with faster motor upon request

### Notices:

- Do not use switches with simultaneous UP/DOWN command
- Programming of the end positions possible via any adjustment cable. Any setting cable that has a programming button or permits simultaneous UP/DOWN commands can be used.

### End position adjustment:

TOP	Stop on torque	BOTTOM	Stop on free position
-----	----------------	--------	-----------------------

## Technical data:

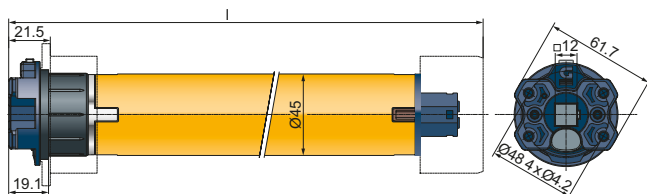
Technical data tubular motor SOLIDline-SOC (GU45..)						
	GU4506	GU4510	GU4520	GU4530	GU4540	GU4550
Voltage	230V~/50Hz					
Current	0.36 A	0.47 A	0.63 A	0.8 A	1.0 A	1.0 A
Cos Phi (cosφ)	>0.95					
Inrush current (factor)	x 1.2					
Power	83 W	105 W	140 W	180 W	220 W	220 W
Torque	6 Nm	10 Nm	20 Nm	30 Nm	40 Nm	50 Nm
Speed	16 rpm	16 rpm	16 rpm	16 rpm	16 rpm	12 rpm
Limit switch-off range	> 200 revolutions					
Protection class	IP 44					
Total length [l]	509.5 mm	519.5 mm	549.5 mm	569.5 mm	589.5 mm	589.5 mm
Operating mode	S2 4 min	S2 4 min	S2 5 min	S2 4 min	S2 4 min	S2 4 min
Sound pressure level <sup>1)</sup>	39 dB(A)	39 dB(A)	41 dB(A)	41 dB(A)	43 dB(A)	-
Diameter	45 mm					
Weight	approx. 1.85 kg	approx. 1.90 kg	approx. 2.20 kg	approx. 2.40 kg	approx. 2.70 kg	approx. 2.70 kg
Humidity	dry, non-condensing					
Storage temperature	T = -15 °C ... +70 °C					

<sup>1)</sup> The average sound pressure level data are intended for guidance only. The values were determined by GEIGER at a distance of 1 m, with a hanging motor at idle speed and averaged over 10 seconds. There is no reference to any specific test standard.





Subject to technical changes. Find information to the ambient temperature range of our GEIGER motors under [www.geiger.de](http://www.geiger.de).

## Drawings:

### SOC:

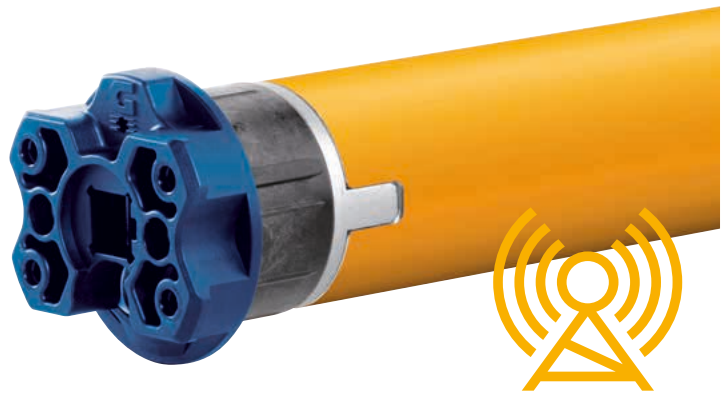


## Accessories:

	Engine bearer	124		Connection cables	134
	Adaptor/driver	130		Radio accessories	181

## SOLIDline Qi Radio

Electronic tubular  
motor Ø 45 mm with  
radio system



### Application:



Cassette awnings

### Characteristics:

#### Plug & Play



Autonomous detection of the upper end positions without time-consuming adjustment work in the installation procedure. Done in only one up and down movement.

#### Driving range detection



The motor recognises which driving range it is in while driving. As a result, it works with as much or as little power as is actually required in the respective driving range. The SoftPlus-QI is exceptionally powerful in the folding point area of the awning, but particularly sensitive in the closing area. This ensures a long service life for the system.

#### Operation



The motor can be operated using a handheld transmitter or alternatively using a (wired) control switch.

#### Hanging protection

The integrated sensitive motor intelligence ensures that ...

##### ■ Obstacle detection in UP direction

... the system is protected during retraction.



#### Referencing



Every 50 cycles, a reference run is carried out to check whether the end positions are right. For this purpose the hanging moves to the upper end position until the drive switches off to torque. The end positions are checked and corrected if necessary.

#### GEIGER Radio 2.0



The unidirectional radio system offers a long range and enables secure communication with remote receivers.

### Product advantages:

- Electronic limit stop
- Automatic detection left and right installation
- Can be connected in parallel
- Plug-in connection cable in different lengths
- In learning mode already on delivery

### Notices:

- Do not use switches with simultaneous UP/DOWN command
- Programming of the end positions possible via any adjustment cable. Any setting cable that has a programming button or permits simultaneous UP/DOWN commands can be used.

### Options:

- Available with faster motor upon request

### End position adjustment:

TOP	Stop on torque	BOTTOM	Stop on free position
-----	----------------	--------	-----------------------

## Technical data:

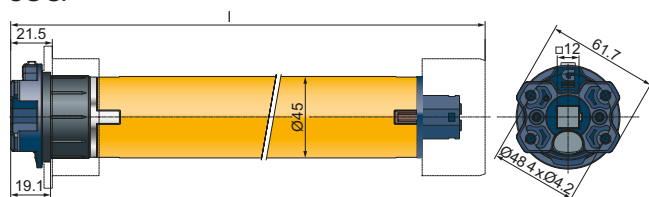
Technical data tubular motor SOLIDline-SOC (GU45..)						
	GU4506	GU4510	GU4520	GU4530	GU4540	GU4550
Voltage	230V~/50Hz					
Current	0.36 A	0.47 A	0.63 A	0.8 A	1.0 A	1.0 A
Cos Phi (cosφ)	>0.95					
Inrush current (factor)	x 1.2					
Power	83 W	105 W	140 W	180 W	220 W	220 W
Torque	6 Nm	10 Nm	20 Nm	30 Nm	40 Nm	50 Nm
Speed	16 rpm	16 rpm	16 rpm	16 rpm	16 rpm	12 rpm
Limit switch-off range	> 200 revolutions					
Protection class	IP 44					
Radio frequency	433 MHz					
Total length [l]	509.5 mm	519.5 mm	549.5 mm	569.5 mm	589.5 mm	589.5 mm
Operating mode	S2 4 min	S2 4 min	S2 5 min	S2 4 min	S2 4 min	S2 4 min
Sound pressure level <sup>1)</sup>	39 dB(A)	39 dB(A)	41 dB(A)	41 dB(A)	43 dB(A)	-
Diameter	45 mm					
Radio frequency	433 MHz					
Weight	approx. 1.85 kg	approx. 1.90 kg	approx. 2.20 kg	approx. 2.40 kg	approx. 2.70 kg	approx. 2.70 kg
Humidity	dry, non-condensing					
Storage temperature	T = -15 °C ... +70 °C					

<sup>1)</sup> The average sound pressure level data are intended for guidance only. The values were determined by GEIGER at a distance of 1 m, with a hanging motor at idle speed and averaged over 10 seconds. There is no reference to any specific test standard.





Subject to technical changes. Find information to the ambient temperature range of our GEIGER motors under [www.geiger.de](http://www.geiger.de).

## Drawings:

### SOC:



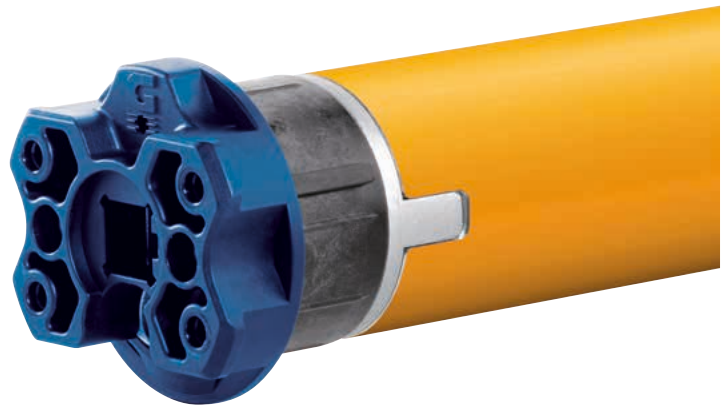
## Accessories:

	Engine bearer	124		Connection cables	134
	Adaptor/driver	130		Radio accessories	181

# SOLIDline

## ZIP-Perfection

### Electronic tubular motor Ø 45 mm



## Application:



ZIP screens

## Characteristics:

### Plug & Play



Autonomous detection of the end positions without time-consuming adjustment work in the installation procedure. Done in only one up and down movement. Fast and precise adjustment of the end positions.

### DualStop-Control



If the system detects an obstacle, the motor moves the hanging in the opposite direction at a fixed value. After two further unsuccessful attempts, the system moves to its safety position (upper end position). This applies in UP and DOWN direction.

### Wind resilience



Obstacle detection can differentiate between an obstacle and a gust of wind. The hanging will safely move to its upper end position in the event of a gust of wind in the UP direction to protect the system and prevent damage to the hanging.

### Slowmotion detection



The motor recognises the system status and can detect changes in winding behaviour. If the hanging moves too slowly in the DOWN direction and the end rail threatens to tilt, the motor will stop automatically to protect the system and the hanging.

### Hanging protection

The integrated sensitive motor intelligence ensures that ...

#### ■ Antifreeze protection

... the hangings that are frozen to the windowsill are detected and not torn off.



#### ■ Soft position

... the hanging will stop before reaching the upper end position to protect the materials.



#### ■ Blocking detection in AB direction

... Obstacles are recognised. The drive stops and thus protects the blind.



#### ■ Obstacle detection in UP direction

... the system is protected during retraction.



### Referencing



Every 50 cycles, a reference run is carried out to check whether the end positions are right. For this purpose the hanging moves to the upper end position until the drive switches off to torque. The end positions are checked and corrected if necessary.

### Crushing protection



This function prevents fingers or other objects from being crushed or damaged.

## Product advantages:

- Electronic limit stop
- Easy commissioning: Plug & Play
- Can be connected in parallel
- Plug-in connection cable in different lengths

## Notices:

- Do not use switches with simultaneous UP/DOWN command
- Programming of the end positions possible via any adjustment cable. Any setting cable that has a programming button or permits simultaneous UP/DOWN commands can be used.

## Options:

- Available with SOC, ROC, or COM head
- Available with faster motor upon request

## End position adjustment:

TOP	*Stop on torque	BOTTOM	*Stop on torque
	Stop on free position		Stop on free position

\* Stopper and anti-lift device/rigid tube connector

## Technical data:

Technical data tubular motor SOLIDline-SOC (GU45..)					
	GU4503	GU4506	GU4510	GU4520	GU4530
Voltage	230V~/50Hz				
Current	0.35 A	0.36 A	0.47 A	0.63 A	0.80 A
Cos Phi (cosφ)	>0.95				
Inrush current (factor)	x 1.2				
Power	80 W	83 W	105 W	140 W	180 W
Torque	3 Nm	6 Nm	10 Nm	20 Nm	30 Nm
Speed	26 rpm	16 rpm	16 rpm	16 rpm	16 rpm
Limit switch-off range	> 200 revolutions				
Protection class	IP 44				
Total length [l] <sup>1)</sup>	467.5 mm	509.5 mm	519.5 mm	549.5 mm	569.5 mm
Operating mode	S2 4 min	S2 4 min	S2 4 min	S2 5 min	S2 4 min
Sound pressure level <sup>2)</sup>	39 dB(A)	39 dB(A)	39 dB(A)	41 dB(A)	41 dB(A)
Diameter	45 mm				
Weight	approx. 1.70 kg	approx. 1.85 kg	approx. 1.90 kg	approx. 2.20 kg	approx. 2.40 kg
Humidity	dry, non-condensing				
Storage temperature	T = -15 °C ... +70 °C				

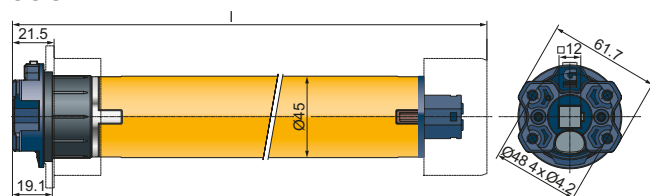
<sup>1)</sup> SOLIDline-ROC: + 5.9 mm / SOLIDline-COM: + 4.2 mm

<sup>2)</sup> The average sound pressure level data are intended for guidance only. The values were determined by GEIGER at a distance of 1 m, with a hanging motor at idle speed and averaged over 10 seconds. There is no reference to any specific test standard.

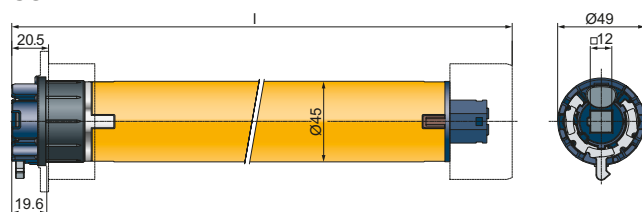
Subject to technical changes. Find information to the ambient temperature range of our GEIGER motors under [www.geiger.de](http://www.geiger.de).

## Drawings:

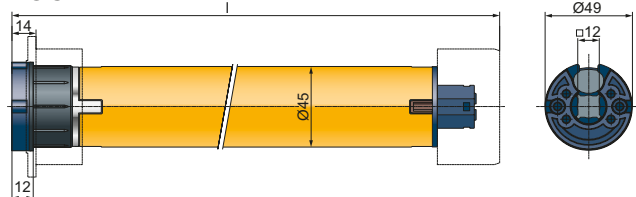
### SOC:







### COM:



### ROC:

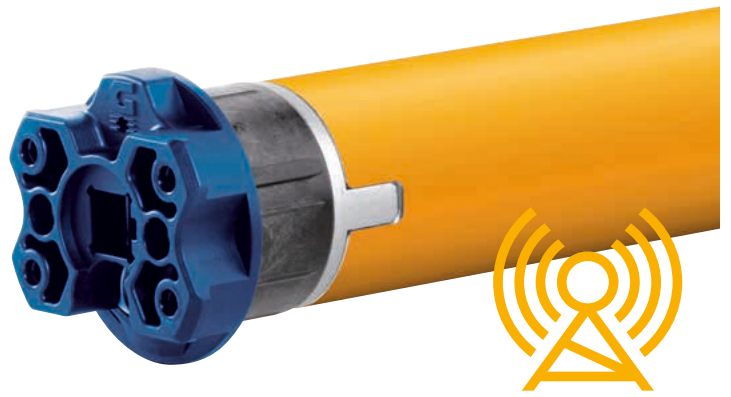


## Accessories:

	Engine bearer	124		Connection cables	134
	Adaptor/driver	130		Radio accessories	181

## SOLIDline ZIP Radio

Electronic tubular  
motor Ø 45 mm with  
radio



### Application:



ZIP screens

### Characteristics:

#### Plug & Play



Autonomous detection of the end positions without time-consuming adjustment work in the installation procedure. Done in only one up and down movement. Fast and precise adjustment of the end positions.

#### DualStop-Control



If the system detects an obstacle, the motor moves the hanging in the opposite direction at a fixed value. After two further unsuccessful attempts, the system moves to its safety position (upper end position). This applies in UP and DOWN direction.

#### Wind resilience



Obstacle detection can differentiate between an obstacle and a gust of wind. The hanging will safely move to its upper end position in the event of a gust of wind in the UP direction to protect the system and prevent damage to the hanging.

#### Slowmotion detection



The motor recognises the system status and can detect changes in winding behaviour. If the hanging moves too slowly in the DOWN direction and the end rail threatens to tilt, the motor will stop automatically to protect the system and the hanging.

#### Operation



The motor can be operated using a handheld transmitter or alternatively using a (wired) control switch.

#### Hanging protection

The integrated sensitive motor intelligence ensures that ...

##### ■ Antifreeze protection

... the hangings that are frozen to the windowsill are detected and not torn off.



##### ■ Soft position

... the hanging will stop before reaching the upper end position to protect the materials.



##### ■ Blocking detection in AB direction

... Obstacles are recognised. The drive stops and thus protects the blind.



##### ■ Obstacle detection in UP direction

... the system is protected during retraction.



#### Referencing



Every 50 cycles, a reference run is carried out to check whether the end positions are right. For this purpose the hanging moves to the upper end position until the drive switches off to torque. The end positions are checked and corrected if necessary.

#### Crushing protection



This function prevents fingers or other objects from being crushed or damaged.

#### GEIGER Radio 2.0



The unidirectional radio system offers a long range and enables secure communication with remote receivers.

### Product advantages:

- Electronic limit stop
- Easy commissioning: Plug & Play
- Can be connected in parallel
- Plug-in connection cable in different lengths

### Notices:

- Do not use switches with simultaneous UP/DOWN command
- Programming of the end positions possible via any adjustment cable. Any setting cable that has a programming button or permits simultaneous UP/DOWN commands can be used.

### Options:

- Available with SOC, ROC, or COM head
- Available with faster motor upon request

### End position adjustment:

TOP	*Stop on torque	BOTTOM	*Stop on torque
	Stop on free position		Stop on free position

\* Stopper and anti-lift device/rigid tube connector

## Technical data:

Technical data tubular motor SOLIDline-SOC (GU45..)					
	GU4503	GU4506	GU4510	GU4520	GU4530
Voltage	230V~/50Hz				
Current	0.35 A	0.36 A	0.47 A	0.63 A	0.80 A
Cos Phi (cosφ)	>0.95				
Inrush current (factor)	x 1.2				
Power	80 W	83 W	105 W	140 W	180 W
Torque	3 Nm	6 Nm	10 Nm	20 Nm	30 Nm
Speed	26 rpm	16 rpm	16 rpm	16 rpm	16 rpm
Limit switch-off range	> 200 revolutions				
Protection class	IP 44				
Radio frequency	433 MHz				
Total length [l] <sup>1)</sup>	467.5 mm	509.5 mm	519.5 mm	549.5 mm	569.5 mm
Operating mode	S2 4 min	S2 4 min	S2 4 min	S2 5 min	S2 4 min
Sound pressure level <sup>2)</sup>	39 dB(A)	39 dB(A)	39 dB(A)	41 dB(A)	41 dB(A)
Diameter	45 mm				
Radio frequency	433 MHz				
Weight	approx. 1.70 kg	approx. 1.85 kg	approx. 1.90 kg	approx. 2.20 kg	approx. 2.40 kg
Humidity	dry, non-condensing				
Storage temperature	T = -15 °C ... +70 °C				

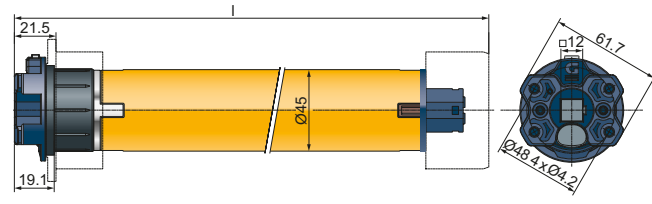
<sup>1)</sup> SOLIDline-ROC: + 5.9 mm / SOLIDline-COM: + 4.2 mm

<sup>2)</sup> The average sound pressure level data are intended for guidance only. The values were determined by GEIGER at a distance of 1 m, with a hanging motor at idle speed and averaged over 10 seconds. There is no reference to any specific test standard.

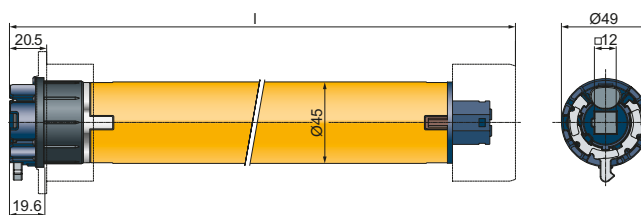
Subject to technical changes. Find information to the ambient temperature range of our GEIGER motors under [www.geiger.de](http://www.geiger.de).

## Drawings:

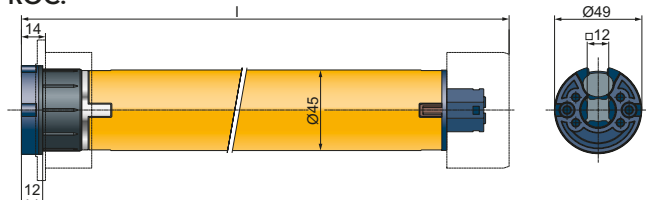
### SOC:







### COM:



### ROC:



## Accessories:

	Engine bearer	124		Connection cables	134
	Adaptor/driver	130		Radio accessories	181

## XS5606

### SoftPerfection-X01

Electronic tubular motor Ø 56 mm



## Application:



Rolling shutter

## Characteristics:

### Delayed teaching



The motor does not learn its actual end positions until the fifth driving cycle.

### Soft position



The hanging stops before reaching its upper end position to protect the materials.

### Synchronised position



Consistent switch-off behaviour is always guaranteed, even with different hanging widths or heights. No rolling shutters hanging differently in their upper end positions anymore

### Plug & Play



Autonomous detection of the end positions without time-consuming adjustment work in the installation procedure. Done in only one up and down movement. (Only when using stoppers and anti-lift devices).

### Hanging protection

The integrated sensitive motor intelligence ensures that ...

#### ■ Antifreeze protection

... the hangings that are frozen to the windowsill are detected and not torn off.



#### ■ Obstacle detection in UP direction... the system is protected during retraction.



### Referencing



Every 50 cycles, a reference run is carried out to check whether the end positions are right. For this purpose the hanging moves to the upper end position until the drive switches off to torque. The end positions are checked and corrected if necessary.

## Product advantages:

- Electronic limit stop
- Automatic detection left and right installation
- Can be connected in parallel
- Plug-in connection cable in different lengths
- In learning mode already on delivery

## Notices:

- Do not use switches with simultaneous UP/DOWN command
- Rigid tube connectors and stoppers are essential
- Adjustment of end positions possible via control switch

## End position adjustment:



\* Stopper and anti-lift device/rigid tube connector

## Technical data:

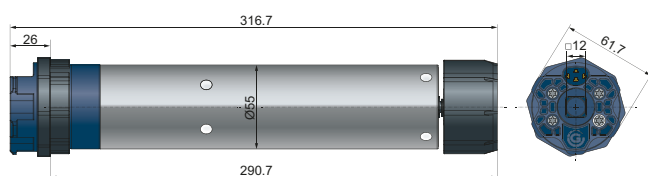
Technical data tubular motor XS56-SOC (GJ5606)	
	XS5606-E16
Application	Rolling shutter with 60 mm octagonal tube (> 370 mm), tube material < 0.60 mm
Voltage	230V~/50 Hz
Current	0.40 A
Cos Phi (cosφ)	>0.95
Inrush current (factor)	x 1.2
Power	93 W
Torque	6 Nm
Speed	26 rpm
Limit switch-off range	> 200 revolutions
Protection class	IP 54
Total length	316.7 mm
Operating mode	S2 4 min
Sound pressure level <sup>1)</sup>	34 dB(A)
Diameter	55 mm
Weight	approx. 1.5 kg
Humidity	dry, non-condensing
Storage temperature	T = -15 °C ... +70 °C

<sup>1)</sup> The average sound pressure level data are intended for guidance only. The values were determined by GEIGER at a distance of 1 m, with a hanging motor at idle speed and averaged over 10 seconds. There is no reference to any specific test standard.

Subject to technical changes. Find information to the ambient temperature range of our GEIGER motors under [www.geiger.de](http://www.geiger.de).

## Drawings:

### SOC:



## Accessories:

	Engine bearer	124		Connection cables	134
	Adaptor/driver	130		Anti-lift devices	136
	Radio accessories	181			

## RESCUE-R

Solution for rolling shutters  
the  
2nd escape route



### Application:



Rolling shutter

### Sun protection in the escape route

The requirement in accordance with § 33 of the German standard building regulations (Musterbauverordnung; MBO) requires at least two mutually independent escape routes per building level, at least one of which must comply with the provisions for the first escape route.



The first escape route is a traffic route that enables people to leave a danger zone quickly. It either leads out of a building into the open or into a secured area. Examples include corridors, stairs, and exits people use to get to safety in the event of a fire.



In contrast to the first escape route, which is strictly regulated and clearly defined, the second escape route can be designed based on countless possible solutions. Neither the MBO nor any other state building regulations nationwide contain any standardised regulations so far.

This represents a massive challenge in terms of design and implementation for sun protection manufacturers, architects, and planners.

This in turn may lead to conflicts, in particular if the fire protection requirements for sun protection in the second escape route are not considered. Aesthetic aspects, monument protection regulations, structural framework conditions, and, last but not least, costs must be harmonised as well.

### Modular design - systematic motors and gearboxes!

The ingenious design of the RESCUE-R can be easily integrated into all standard rolling shutter boxes. All component dimensions are designed so that only the crank handle needs to be installed inside the building.

- **Space-saving:** Its modular design permits integration of the system into all front and top boxes.
- **Flexible:** RESCUE-R is available for rolling shutters with 60 mm octagonal tube and 50 mm octagonal tube.
- **Maintenance-free:** The motor, freewheel, and gearbox do not require any maintenance.
- **Customer-focused:** The rolling shutter can be opened quickly and easily in an emergency. The gear reduction ratio of 4:1 makes operation child's play.

## RESCUE-R at a glance



## Components at a glance

- **SOLIDline Touch (10 Nm):** Optimal and quick setting of the end positions with just one button. No time-consuming turning of different adjustment screws.
- **SOLIDline X01 RESCUE (10 Nm):** Plug & Play motor with electronic limit switching and self-learning end positions (can be switched in parallel).
- **Freewheel:** Solid freewheel made of extremely stable and durable plastic.
- **Bevel gearbox:** Tried and tested components and assemblies ensure smooth operation. A patent for the gearbox is pending.
- **Air-tight spherical bearing:** Prevents thermal bridges and protects against draughts and condensation.
- **AvantGarde crank:** Aesthetic crank handle with concealed mechanism can be discreetly integrated into the room.

## Installation

The freewheel with tube driver is plugged onto the motor. The system is installed as usual, except that the gearbox is fitted instead of the counter bearing and the roller capsule. If a specific direction of crank rotation is required, the gearbox can be rotated through 180° axially. The tube length/hanging width must not be less than 750 mm.

## Operation in case of fire

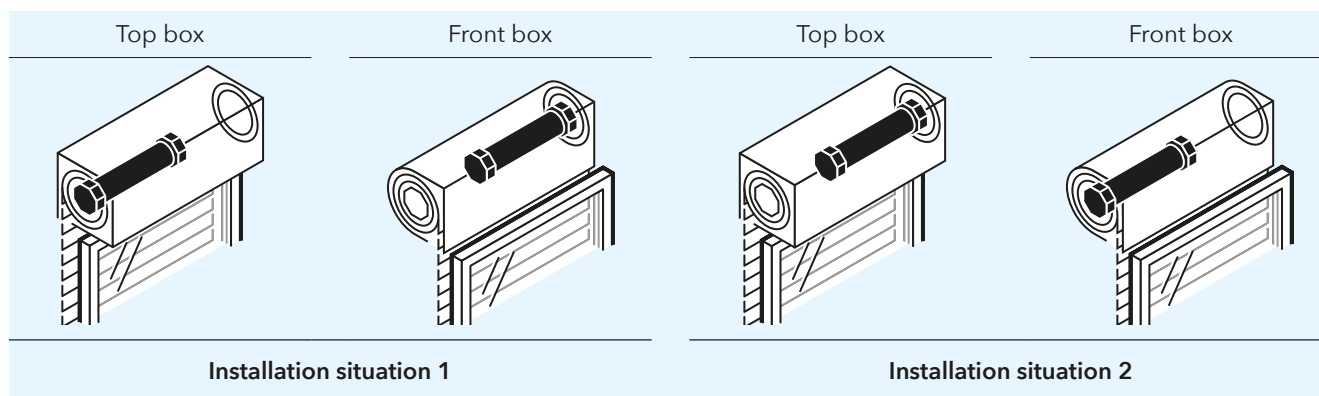
The RESCUE-R is used if the rolling shutter cannot be raised electrically in the event of a fire. Simply remove the rod from its holder and turn it. The safety seal is used to visually indicate that the crank should only be operated in an emergency.

The freewheel is triggered by operating the emergency hand crank. You may hear a repeated clicking noise here.

## Return to operation

No special actions are necessary when putting the two SOLIDline motors back into operation. If the blind was opened with the crank handle, turn the crank handle a quarter turn in the opposite direction before putting them into operation to relieve the gearbox and prevent the crank handle from turning during motorised operation.

## RESCUE-R - choosing the right kit or module solution



## RESCUE-R kit or modules - set contents

Components	Kit	Modules 1.x	Modules 2.x	Modules 3.x
SOLIDline SOC 10 Nm	●	●	-	-
Connection cable, length = 3 m, with open cable ends	●	●	-	-
Tube adapter	●	●	-	●
Freewheel with tube driver	●	●	-	●
Bevel gearbox 4:1, drive 6 mm square	●	-	●	●
Airtight spherical bearing, 90°, plate 22x85 mm	●	-	●	-
AvantGarde aluminium frame, length = 1,200 mm	●	-	●	-
Plastic crank holder, RAL 9016	●	-	●	-
Security seal	●	-	●	-

## Ordering table

		Installation situation 1		Installation situation 2	
		60 mm oct. tube	50 mm oct. tube	60 mm oct. tube	50 mm oct. tube
Kits	SOLIDline Touch	Kit 1 M45F9000	Kit 3 M45F9002	Kit 2 M45F9001	Kit 4 M45F9003
	SOLIDline X01 RESCUE	Kit 5 M45F9010	Kit 7 M45F9012	Kit 6 M45F9011	Kit 8 M45F9013
Modules 1.x	SOLIDline Touch	Module 1.1 M45F9050	Module 1.3 M45F9052	Module 1.2 M45F9051	Module 1.4 M45F9053
	SOLIDline X01 RESCUE	Module 1.5 M45F9150	Module 1.7 M45F9152	Module 1.6 M45F9151	Module 1.8 M45F9153
Modules 2.x		Module 2.1 456F200	Module 2.2 456F201	Module 2.1 456F200	Module 2.2 456F201
Modules 3.x		Module 3.1 456F300	Module 3.3 456F302	Module 3.2 456F301	Module 3.4 456F303

## Technical data:

Technical data tubular motor SOLIDline-SOC (GU4510)	
SOLIDline Touch/SoftPerfection-X01 RESCUE	
Voltage	230V~/50Hz
Current	0.47 A
Cos Phi ( $\cos\varphi$ )	>0.95
Inrush current (factor)	x 1.2
Power	105 W
Torque	10 Nm
Speed	16 rpm
Limit switch-off range	38 revolutions (Touch) / > 200 revolutions (SoftPerfection-X01)
Protection class	IP 44
Total length [l]	519.5 mm
Operating mode	S2 4 min
Sound pressure level <sup>1)</sup>	39 dB(A)
Diameter	45 mm
Weight	approx. 1.90 kg
Humidity	dry, non-condensing
Storage temperature	T = -15 °C ... +70 °C

<sup>1)</sup> The average sound pressure level data are intended for guidance only. The values were determined by GEIGER at a distance of 1 m, with a hanging motor at idle speed and averaged over 10 seconds. There is no reference to any specific test standard.

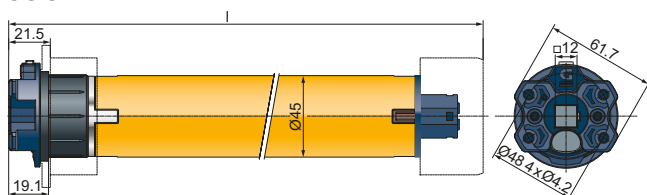
Subject to technical changes. Find information to the ambient temperature range of our GEIGER motors under [www.geiger.de](http://www.geiger.de).

Technical data bevel gearbox 456F150/ 456F151	
Max. output torque	12 Nm
Gear reduction	4:1
Efficiency	0.85

Subject to technical changes.

## Drawings:

### SOC:



## Accessories:

	Engine bearer	124		Anti-lift device	136
	Radio accessories	181			

**Gerhard Geiger GmbH & Co. KG**  
Schleifmühle 6 | D-74321 Bietigheim-Bissingen  
T +49 (0) 7142 9380 | F +49 (0) 7142 938 230  
info@geiger.de | www.geiger.de

**GEIGER**  
**ANTRIEBSTECHNIK**